



**raumfabrik**

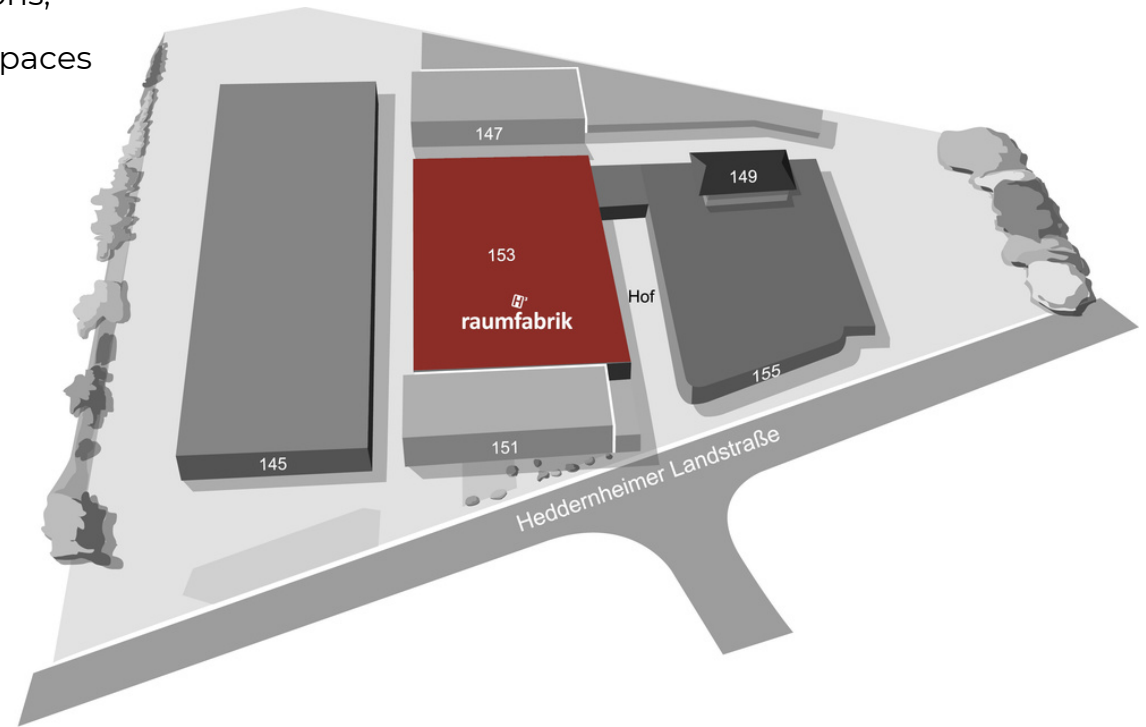
freiraum für ideen





# raumfabrik Frankfurt

The raumfabrik Frankfurt, a former metalware manufacturing hall from the 1960s, is located within the premises of the Heddernheimer Höfe. This is an area spanning over 11,000 sqm in the northwest of Frankfurt, offering a diverse array of art, culture, and commercial spaces. Educational institutions, artists, craftspeople, musicians, along with the event spaces of raumfabrik Frankfurt, collectively make the Heddernheimer Höfe a cultural hub within the neighborhood of Heddernheim.



# Our history

**1960**

## **A former factory**

The Heddernheimer Metalware Factory is constructing the factory building for the production of household goods.

**1973**

## **Use as a warehouse**

Production in Heddernheim ceased in the 1970s, and the factory was subsequently rented out as a warehouse.

**2014**

## **A space for creative minds**

The Heddernheimer Höfe are established as a district for art, culture, and commerce.

**2019**

## **Opening of the raumfabrik Frankfurt**

The event hall opened in April 2019 and plans expansions with the addition of a bistro & catering service.

# A flexible location

The raumfabrik Frankfurt, spanning over 1,700 sqm, is situated at the heart of the Heddernheimer Höfe complex. It serves as an event venue featuring 5 separate event spaces along with service areas. These diverse spaces, including a secluded courtyard, are available for a wide range of events. raumfabrik Frankfurt stands out as the premier location for exclusive events, ranging from workshops and corporate gatherings to exhibitions and product launches, as well as film and photo productions

## At first glance

- 750 sqm of barrier-free, drivable former factory hall
- Ceiling height of 9 meters
- 5 additional rooms ranging from 70 square meters to 275 square meters, suitable for various purposes such as back-office spaces
- Large adjacent courtyard (280 sqm)
- Walls suitable for projections
- Capability to host a wide range of event formats
- On-site technical support partner
- Easily accessible from Frankfurt city center by car within 15 minutes
- Direct connection to the city center via the U1/U9 subway lines (20 min.)





# Floor plan

## Preparation Room Cateringküche

- Floorspace 102 m<sup>2</sup>
- Separate access for delivery

## Workshop Room Kreativwerkstatt

- Floorspace 102 m<sup>2</sup>
- Separate access for delivery

## Event Space raumfabrik

- Ceiling height 9 meters
- Floorspace 387 m<sup>2</sup>

## Workshop Room Atelier

- Floorspace 275 m<sup>2</sup>
- Access to the first floor

## Toilets (barrier-free)

## Event Space raumfabrik

- Ceiling height 3 meters
- Floorspace 285 m<sup>2</sup>

## Event Space raumfabrik

- Ceiling height 3 meters
- Floorspace 76 m<sup>2</sup>

## Toilets

## Bistro

- Floorspace 115 m<sup>2</sup>
- Direct access from the courtyard



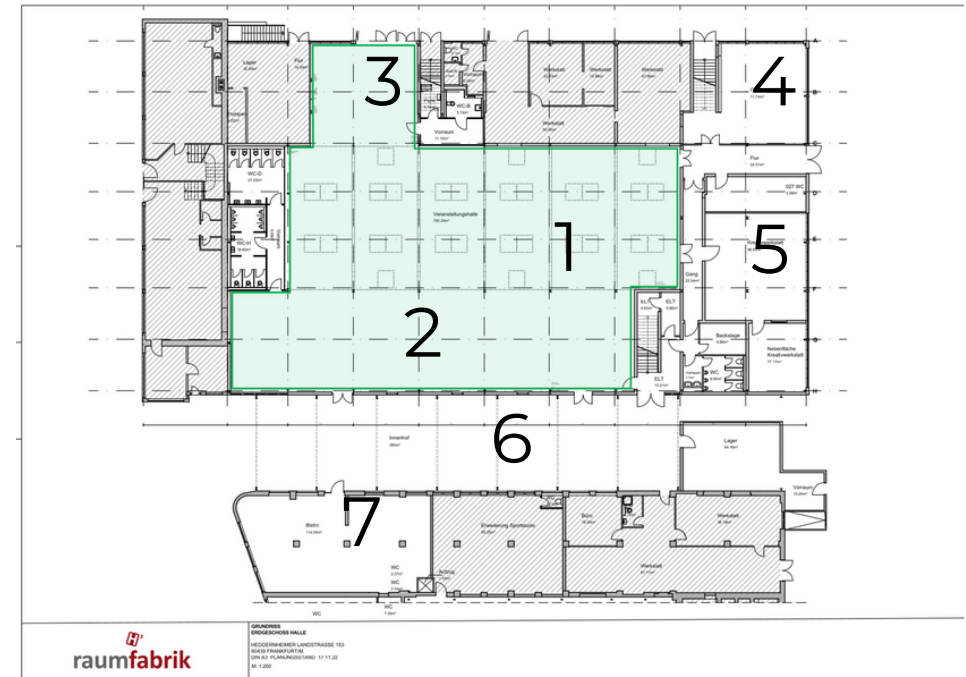
# Dimensions and square metres

	Length (m)	Width (m)	Hight (m)	(Floorspace sqm)
<b>Hall raumfabrik (total floorspace)</b>				<b>748</b>
Central aisle	32,00	11,80	9,00	387
Large aisle (right)	33,50	8,50	3,00	285
Small aisle (left)	8,90	8,50	3,00	76
<b>Atelier</b>	32,50	8,36	bis zu 7,00	<b>272</b>
<b>Courtyard</b>	35,00	8,00		<b>280</b>
<b>Cateringküche</b>				<b>70</b>
<b>Kreativwerkstatt</b>				<b>75+27</b>
<b>Bistro</b>				<b>115</b>

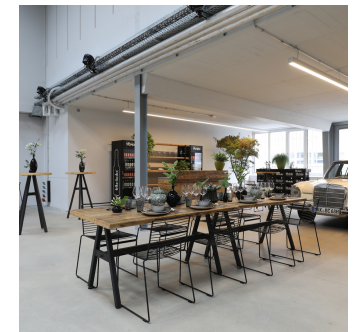


# Hall raumfabrik

The raumfabrik hall offers ample space for various event formats, totaling 750 sqm. Divided into three sections, alongside the central aisle measuring 387 sqm with a ceiling height of 9 meters, there are two smaller side aisles. These areas are 285 sqm and 76 sqm respectively, with a ceiling height of 3 meters. These diverse spaces are ideal for setting up amenities such as cloakrooms, catering areas, or lounges. For the easy transportation of materials and setups, there is a ground-level gate on the side of the event hall, suitable for vehicles. Notably, the hall benefits from generous natural light; however, it's also possible to fully darken the space without much effort.



- 1 Central aisle
- 2 Large aisle
- 3 Small aisle
- 4 Cateringküche
- 5 Kreativwerkstatt
- 6 Courtyard
- 7 Bistro



# Hall raumfabrik

## Your benefits



Barrier-free event spaces on the ground floor



Lighting and sound equipment can be booked through our local technical partner



Internet/Wi-Fi (redundant system)



Good public transport connections



Additional backstage rooms on the ground floor and first floor



Separate room for catering preparation



13 high-power electrical connections



Blackout option for the roof and side windows



14 hanging points at 7 kN and 4 hanging points at 1.8 kN



4 entrances on the ground floor including a large gate (3.50 meters wide and 2.84 meters high; suitable for vehicle entry)

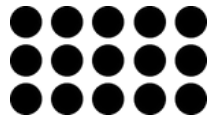


Polished concrete floor

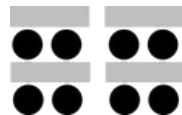


Radiators and heating pipes, warmth circulated by ceiling fans

## Seating arrangements



**Theater**  
460 people



**Classroom**  
400 people



**U-Shape**  
200 people



**Boardroom**  
530 people



**Baquet**  
430 people

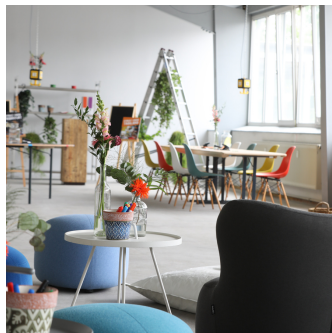
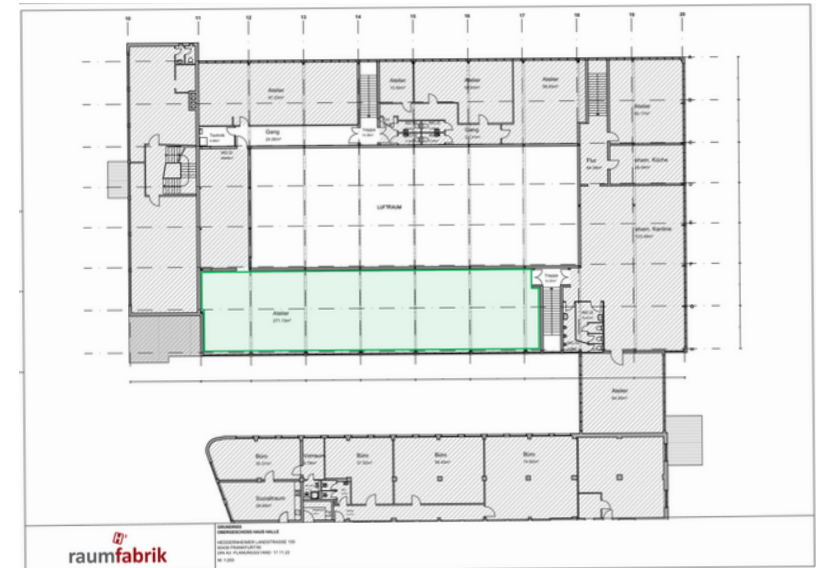


**Cocktail**  
600 people



# Atelier

On the first floor above the raumfabrik hall, there is an additional space well-suited for exhibitions, smaller workshops, or ancillary events. This room is separated from the rest of the raumfabrik hall and can be accessed via a staircase located at the rear end of the event hall. With a size of 285 sqm, it can accommodate seating for up to 80 people.



# Atelier

## Your benefits



Lighting and sound equipment can be booked through our local technical partner



Internet/Wi-Fi (redundant system)



Polished concrete floor



Optional catering services available



Good public transport connections



Well-suited for photo and film shoots due to high ceilings

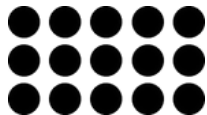


Hybrid events easily facilitated

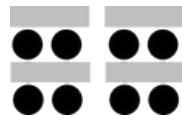


Additional backstage rooms on the ground floor

## Seating arrangements



**Theater**  
80 people



**Classroom**  
40 people



**U-Shape**  
35 people



**Boardroom**  
60 people



**Baquet**  
50 people

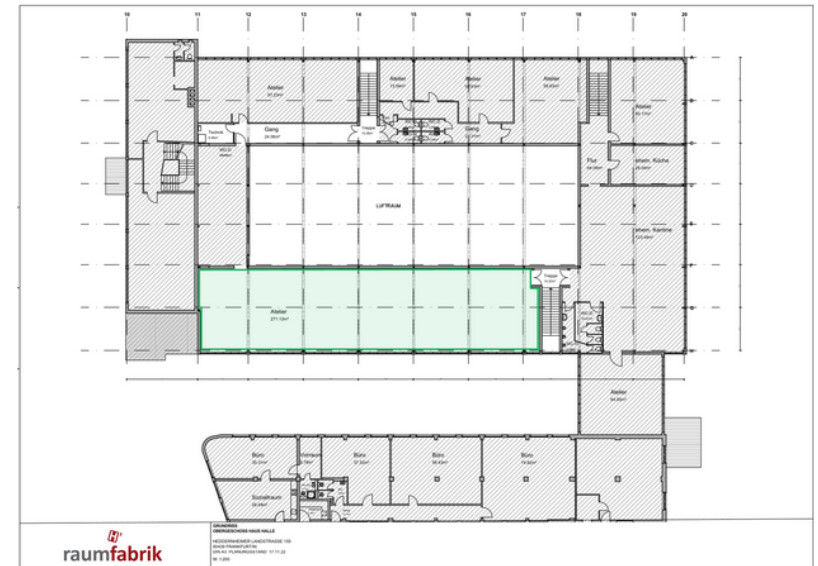


**Cocktail**  
100 people



# Courtyard

Our courtyard is situated directly adjacent to the event hall, providing space for receptions or outdoor breaks. Spanning 280 sqm, the courtyard features old metal pillars, adding to its unique industrial character. You are welcome to utilize the courtyard as an entrance area as well, as the entrance door to the event hall opens onto the courtyard.



# Courtyard

## Your benefits



Located directly between  
the hall and bistro



Hanging facilities available

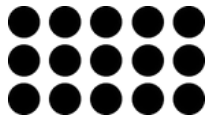


Internet/Wi-Fi (redundant  
system)

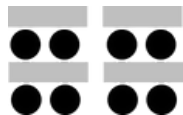


Shade provided by  
sunshades

## Seating arrangements



**Theater**  
400 people



**Classroom**  
150 people



**U-Shape**  
200 people



**Boardroom**  
350 people



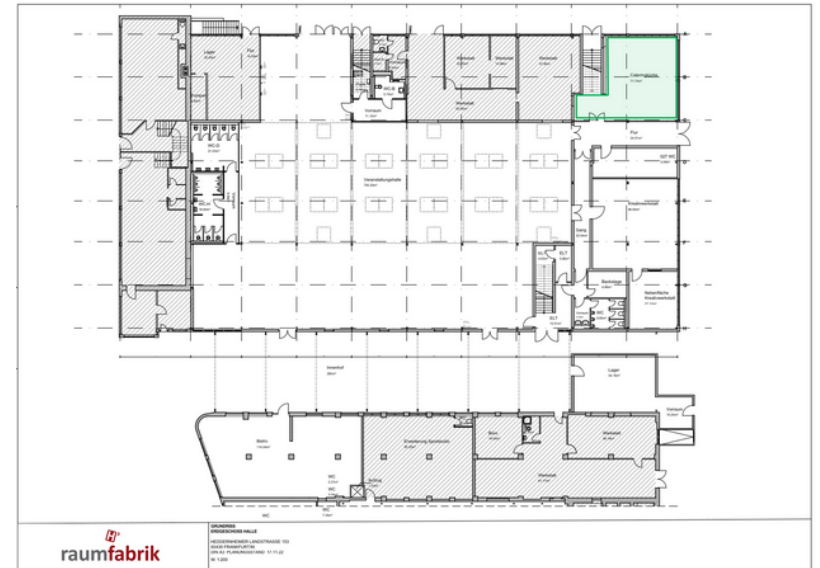
**Baquet**  
250 people



**Cocktail**  
600 people

# Cateringküche

Behind the raumfabrik hall is the Cateringküche, spanning 71 sqm. This area is separated from the rest of the premises and features 4 high-power electrical and water connections. The location of the Cateringküche ensures short distances to both the raumfabrik and the Kreativwerkstatt. Deliveries are made through a separate entrance, ensuring that events in the raumfabrik hall remain undisturbed.



## Your benefits



4 high-power and 19 standard electrical outlets



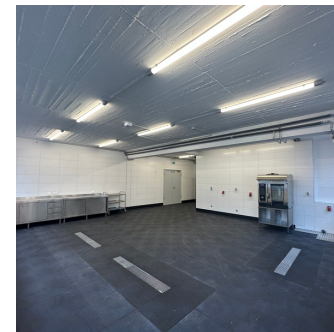
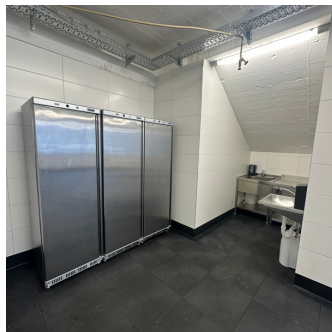
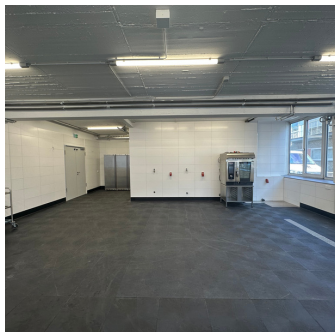
4 water connections



Private entrance



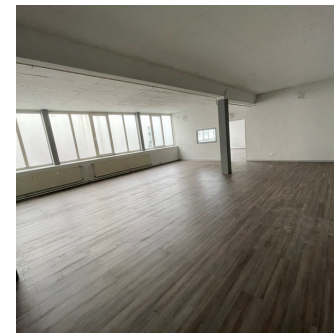
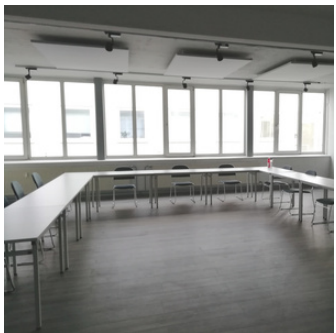
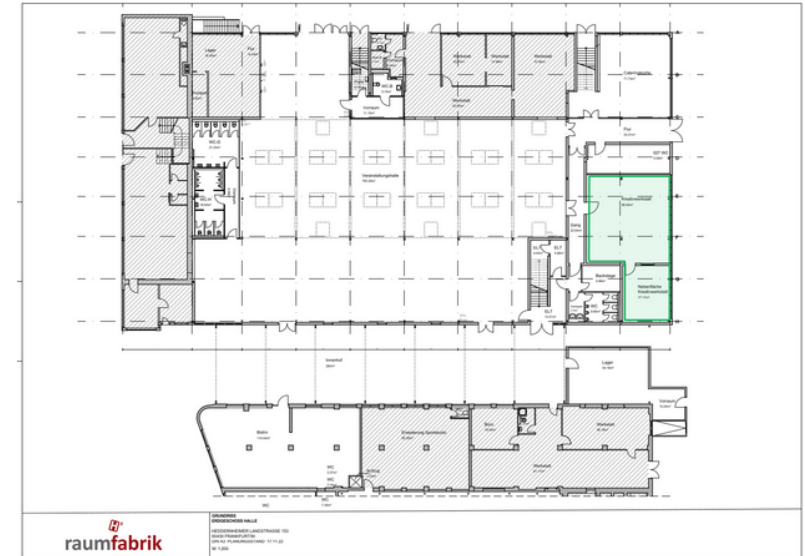
Short distances to the hall and the Kreativwerkstatt





# Kreativwerkstatt

Located in the rear part of the raumfabrik hall is the Kreativwerkstatt, spanning 75 sqm. Adjacent to it is a small additional area of 27 sqm. The total of 102 sqm can be utilized, for example, for workshops or as back-office space. One of the key advantages for users is that this area has a separate entrance and can also be rented individually.



# Kreativwerkstatt

## Your benefits



Lighting and sound equipment can be booked through our local technical partner



Good public transport connections



Internet/Wi-Fi (redundant system)



High-quality flooring



Barrier-free event space on the ground floor



Private entrance

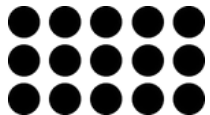


Optional catering services available

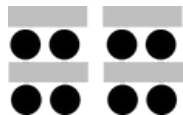


280 sqm courtyard

## Seating arrangements



**Theater**  
60 people



**Classroom**  
36 people



**U-Shape**  
10 people



**Boardroom**  
60 people



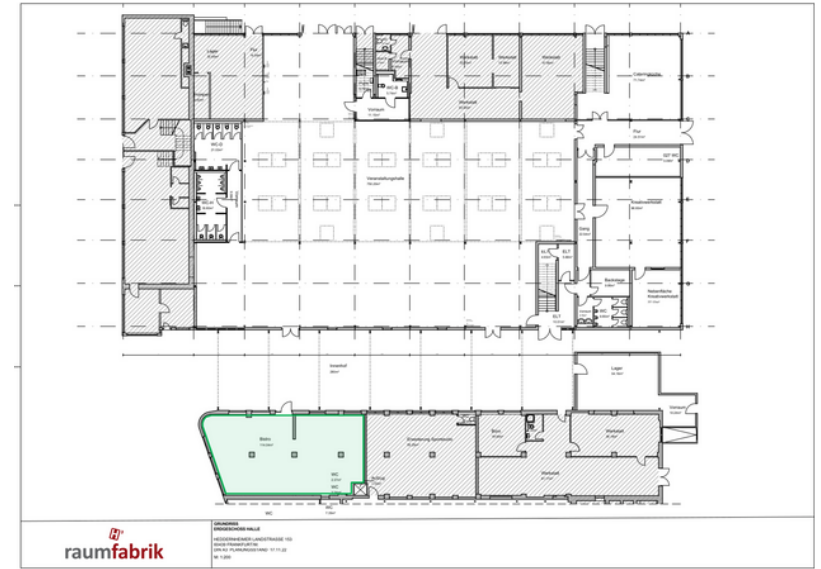
**Baquet**  
40 people



**Cocktail**  
38 people

# Bistro

The bistro, spanning 115 sqm, is centrally located within the Heddernheimer Höfe premises and directly opposite the raumfabrik hall, separated only by a courtyard that can also be utilized. It can be rented separately or in addition to other spaces. The bistro can serve as a breakout area, for example, or by arrangement, as a more traditional dining venue, given its kitchen's extensive equipment, capable of preparing fine menus.



## Your benefits



Lighting and sound equipment can be booked through our local technical partner



Internet/Wi-Fi (redundant system)



Professionally and comprehensively equipped kitchen



Immediate proximity to the event hall and other spaces



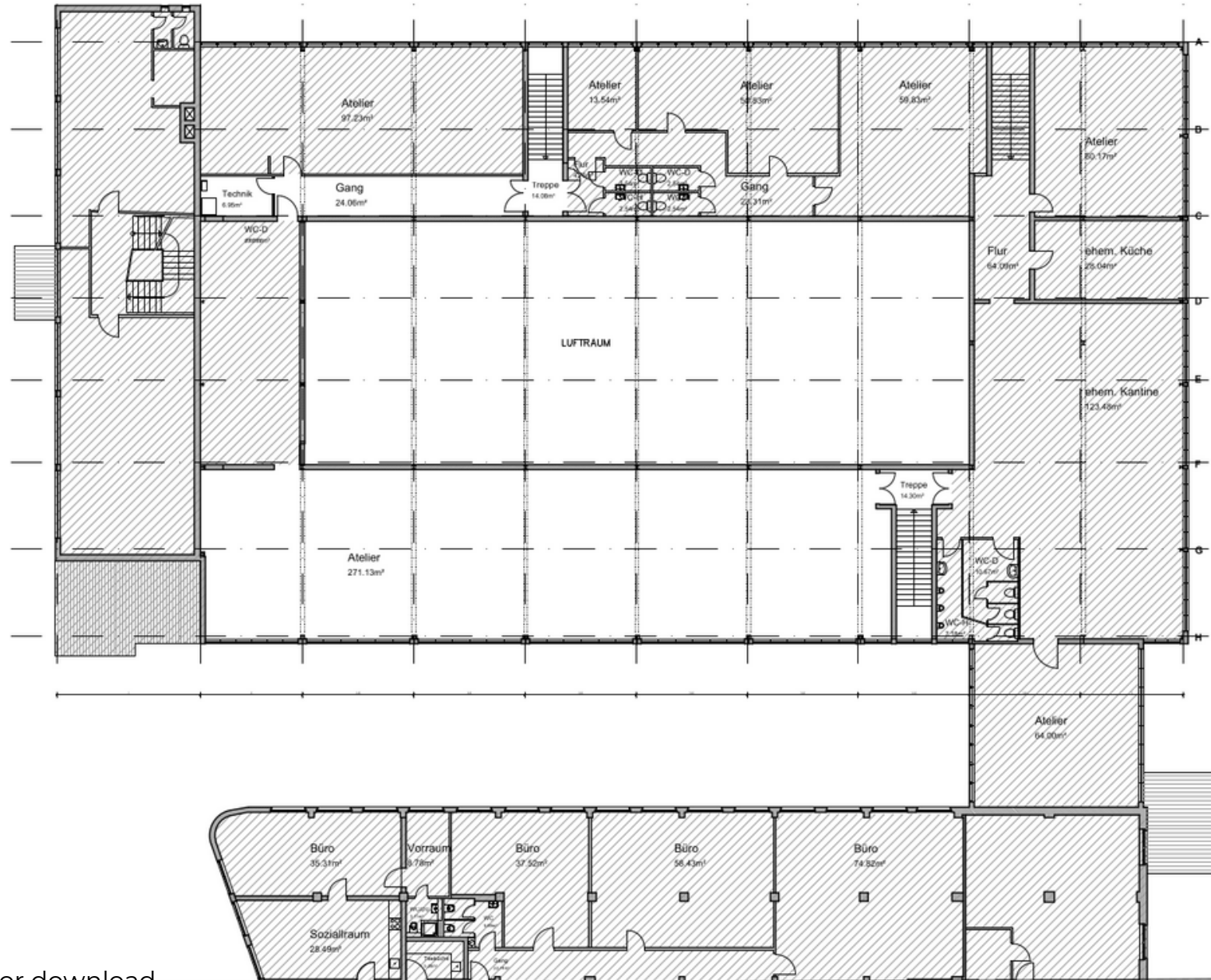


# Ground floor plan



[Original plan for download](#)

# Floor plan first floor



# Our partners

raumfabrik Frankfurt collaborates with partners in the catering, technical, and equipment sectors, distinguished by years of experience. Depending on the requirements, the initial contact or the entire process can be managed through raumfabrik Frankfurt. Of course, clients are also welcome to book their own service providers.



Manuel Hoefel is our bistro operator and catering partner. He is a trained chef in classical cuisine. His passion lies in modern, creative crossover cuisine as well as reinterpreting classics. Whether it's a flying buffet, grill event, live cooking, or plated dishes - Manuel Hoefel will cater to your preferences and desires.



TASTE OF NOW collaborates with a variety of talented chefs and personalities from the gastronomy industry, each bringing their own unique styles to events. This allows for the culinary design of an event to be tailored precisely to the preferences, guest profile, and budget of each individual client.



FLOW THE KITCHEN's strength lies in its comprehensive, high-performance portfolio of in-house offerings, including culinary options, equipment, decoration, bar services, live cooking, service, and much more. Products and suppliers are sourced locally. Their passion for good food is reflected in the modern, sophisticated, and sustainable culinary approach of freshly prepared dishes.



# Our partners

raumfabrik Frankfurt collaborates with partners in the catering, technical, and equipment sectors, distinguished by years of experience. Depending on the requirements, the initial contact or the entire process can be managed through raumfabrik Frankfurt. Of course, clients are also welcome to book their own service providers.



Regardless of location or time, FR Catering is a reliable and competent partner. They successfully navigate the demands of diverse clients and anticipate every detail, knowing they only have one event to prove themselves as the right partner.



Our technical partner, sound for friends, is also located on the premises of the Heddernheimer Höfe. Their warehouse holds everything necessary for the successful execution of an event, ensuring short distances and convenience.



As event outfitters, Party Rent takes care of the staging of an event. This involves creating the atmosphere as well as the personalized concept that underpins it and meaningfully underscores the communication goals. The product portfolio includes event equipment such as furniture, tableware, and kitchen appliances, as well as decorations, carpets, and flooring options.

# Hotels nearby

## **relexa hotel Frankfurt/Main**

Lurgiallee 2, 60439 Frankfurt

Phone: +49 69 95778 0

Email: [frankfurt.main@relexa-hotel.de](mailto:frankfurt.main@relexa-hotel.de)

[www.relexa-hotel-frankfurt.de](http://www.relexa-hotel-frankfurt.de)

Distance: 1 km

Accessibility: 15 minutes by foot

Number of rooms: 163

## **elaya hotel frankfurt oberursel**

Zimmersmühlenweg 35, 61440

Oberursel (Taunus)

Phone: +49 6171 5000

Email: [frankfurt-oberursel@elaya-hotels.com](mailto:frankfurt-oberursel@elaya-hotels.com)

[www.elaya-hotels.com/frankfurt-oberursel](http://www.elaya-hotels.com/frankfurt-oberursel)

Distance: 6 km

Accessibility: 10 minutes by car

Number of rooms: 220

## **Trip inn Frankfurt Nordwestzentrum**

Walter -Möller-Platz 2, 60439 Frankfurt

Phone: + 49 69 95 11 47 20

Email: [nwz@tripinn-hotels.com](mailto:nwz@tripinn-hotels.com)

[www.tripinn-hotels.com/nwz](http://www.tripinn-hotels.com/nwz)

Distance: 1 km

Accessibility: 15 minutes by foot

Number of rooms: 93

## **B&B HOTEL Frankfurt-Nord**

Heinrich-Lanz-Allee 3 , 60437 Frankfurt

Phone: +49 69 950904-0

Email: [frankfurt-nord@hotelbb.com](mailto:frankfurt-nord@hotelbb.com)

[www.hotel-bb.com/de/hotel/frankfurt-nord](http://www.hotel-bb.com/de/hotel/frankfurt-nord)

Distance: 7 km

Accessibility: 30 minutes by U9/12  
minutes by car

## **Hotel Heddernheimer Hof**

Heddernheimer Landstr. 82, 60439  
Frankfurt

Phone: +49 69 58 33 44

Email: [info@heddernheimerhof.de](mailto:info@heddernheimerhof.de)

[www.heddernheimerhof.eu/de](http://www.heddernheimerhof.eu/de)

Distance: 600 m

Accessibility: 10 minutes by foot

## **Dorint Hotel Frankfurt/Oberursel**

Königsteiner Straße 29, 61440  
Oberursel

Phone: +49 6171 2769-0

Email: [info.oberursel@dorint.com](mailto:info.oberursel@dorint.com)  
[www.hotel-frankfurt-oberursel.dorint.com/de](http://www.hotel-frankfurt-oberursel.dorint.com/de)

Distance: 10 km

Accessibility: 20 minutes by car

Number of rooms: 140

# How to find us

## Navigation Address

Heddernheimer Landstraße 155, 60439 Frankfurt am Main

## Distances

- 15 minutes - Frankfurt city center
- 15 minutes - Frankfurt Airport
- 12 minutes - Eschborn
- 5 minutes - Merton Quarter

## By Car

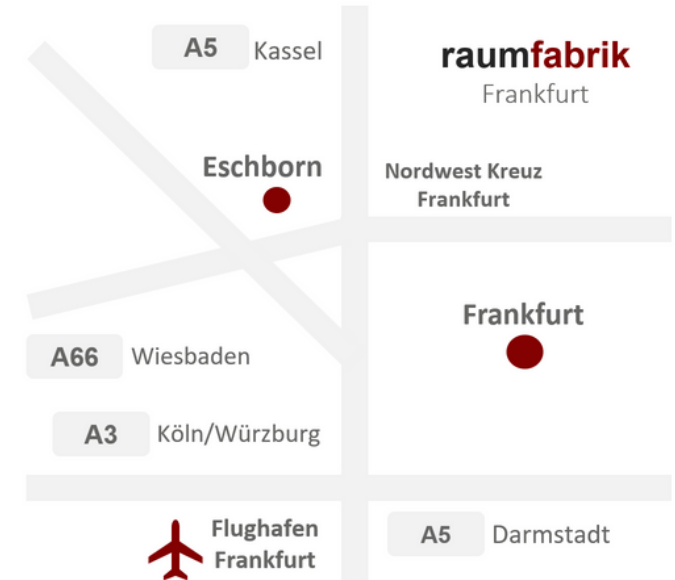
You can reach us by car via the A3, A5, and A66 motorways. We recommend arriving by public transportation.

## By Bus and Train

- U1 + U9 Heddernheimer Landstraße station (1 minute walk)
- U3 + U8 Wiesenau station (10 minutes walk)
- Bus 29 + N3 Oberschelder Weg station (5 minutes walk)

## Parking

- Limited number of parking spaces on-site
- Access with turning circle for buses and trucks





# Contact us

## Operating company

raumfabrik Frankfurt GmbH  
Hedderheimer Landstraße 155  
60439 Frankfurt am Main  
info@raumfabrik-frankfurt.com  
Phone: +49 (0) 175 22 55 012

## Contact

Managing Director: Nicole Harloff  
Mobil: +49 (0) 172 429 1105  
Email: n.harloff@raumfabrik-frankfurt.com

