

EXPOSÉ



ABOUT US

CONTENT:

About us

Floor plan

Hall raumfabrik

Atelier

Courtyard

Cateringfläche

Kreativwerkstatt

Bistro

Room Plan

Our Partners

Hotels nearby

How to find us

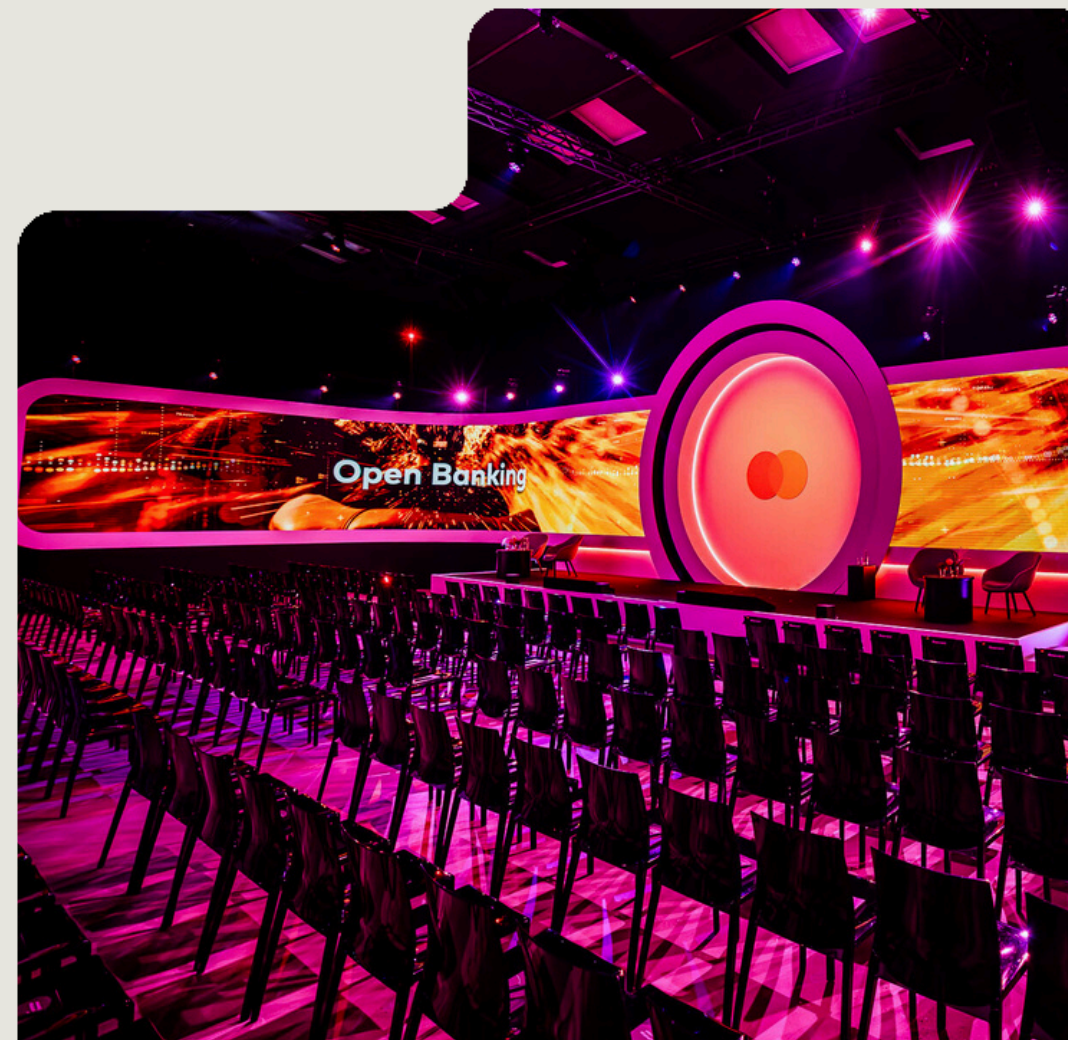
Contact

The raumfabrik Frankfurt, a former metalware manufacturing hall from the 1960s, is located within the premises of the Hedderheimer Höfe. This is an area spanning over 11,000 sqm in the northwest of Frankfurt, offering a diverse array of art, culture, and commercial spaces. Educational institutions, artists, craftspeople, musicians, along with the event spaces of raumfabrik Frankfurt, collectively make the Hedderheimer Höfe a cultural hub within the neighborhood of Heddernheim.

CONTACT:

+49 (0) 69 210 85 444

info@raumfabrik-frankfurt.com



OUR HISTORY

CONTENT:

About us

Floor plan
Hall raumfabrik
Atelier
Courtyard
Cateringfläche
Kreativwerkstatt
Bistro
Room Plan
Our Partners
Hotels nearby
How to find us
Contact

USE AS A WAREHOUSE

Production in Heddernheim ceased in the 1970s, and the factory was subsequently rented out as a warehouse.

OPENING OF raumfabrik FRANKFURT

The event hall opened in April 2019 and plans expansions with the addition of a bistro & catering service.

1960

A FORMER FACTORY

The Heddernheimer Metalware Factory is constructing the factory building for the production of household goods.

1973

2014

A SPACE FOR CREATIVE MINDS

The Heddernheimer Höfe are established as a district for art, culture, and commerce.

2019

CONTACT:

+49 (0) 69 210 85 444

info@raumfabrik-frankfurt.com

A FLEXIBLE LOCATION

CONTENT:

About us

Floor plan

Hall raumfabrik

Atelier

Courtyard

Cateringfläche

Kreativwerkstatt

Bistro

Room Plan

Our Partners

Hotels nearby

How to find us

Contact

The raumfabrik Frankfurt, spanning over 2,100 sqm, is situated at the heart of the Heddernheimer Höfe complex. It serves as an event venue featuring 6 separate event spaces along with service areas. These diverse spaces, including a secluded courtyard, are available for a wide range of events. raumfabrik Frankfurt stands out as the premier location for exclusive events, ranging from workshops and corporate gatherings to exhibitions and product launches, as well as film and photo productions.

AT FIRST GLANCE:

- 820 sqm of barrier-free, drivable former factory hall
- Ceiling height of 9 meters
- 5 additional rooms ranging from 70 square meters to 275 square meters, suitable for various purposes such as back-office spaces
- Large adjacent courtyard (280 sqm)
- Walls and floor suitable for projections
- Capability to host a wide range of event formats
- On-site technical support partner
- Easily accessible from Frankfurt city center by car within 15 minutes
- Direct connection to the city center via the U1/U9 subway lines (20 min.)

CONTACT:

+49 (0) 69 210 85 444

info@raumfabrik-frankfurt.com

CONTENT:

About us

Floor plan

Hall raumfabrik

Atelier

Courtyard

Cateringfläche

Kreativwerkstatt

Bistro

Room Plan

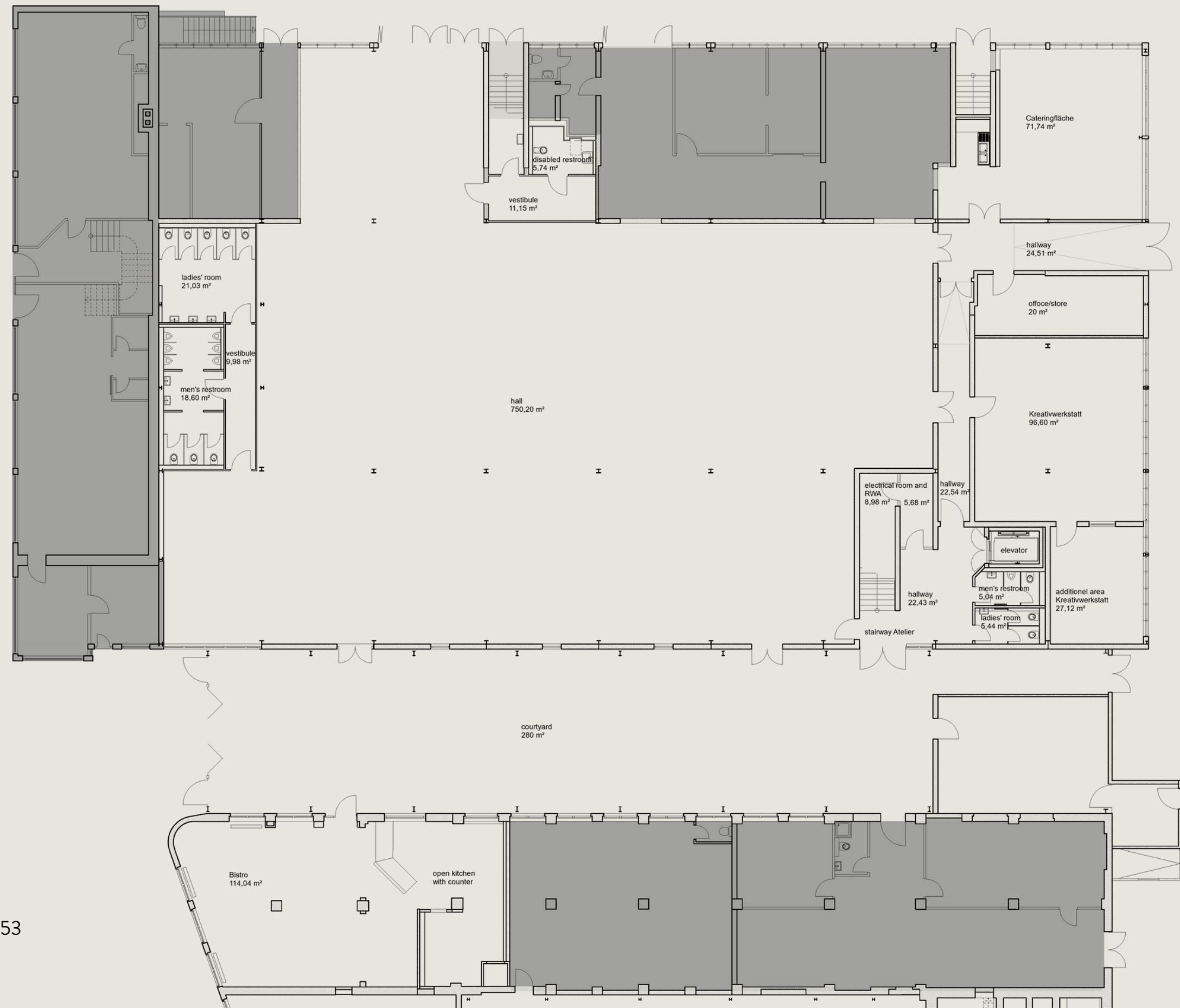
Our Partners

Hotels nearby

How to find us

Contact

GROUND FLOOR PLAN



CONTACT:

+49 (0) 69 210 85 444

info@raumfabrik-frankfurt.com

GROUND FLOOR PLAN HALL

HEDDERNHEIMER LANDSTRASSE 153

60439 FRANKFURT/M.

[Original plan for download](#)

CONTENT:

About us

Floor plan

Hall raumfabrik

Atelier

Courtyard

Cateringfläche

Kreativwerkstatt

Bistro

Room Plan

Our Partners

Hotels nearby

How to find us

Contact

UPPER FLOOR PLAN



CONTACT:

+49 (0) 69 210 85 444

info@raumfabrik-frankfurt.com

UPPER FLOOR PLAN HALLE

HEDDERNHEIMER LANDSTRASSE 153

60439 FRANKFURT/M.

[Original plan for download](#)

HALL raumfabrik

CONTENT:

About us

Floor plan

Hall raumfabrik

Atelier

Courtyard

Cateringfläche

Kreativwerkstatt

Bistro

Room Plan

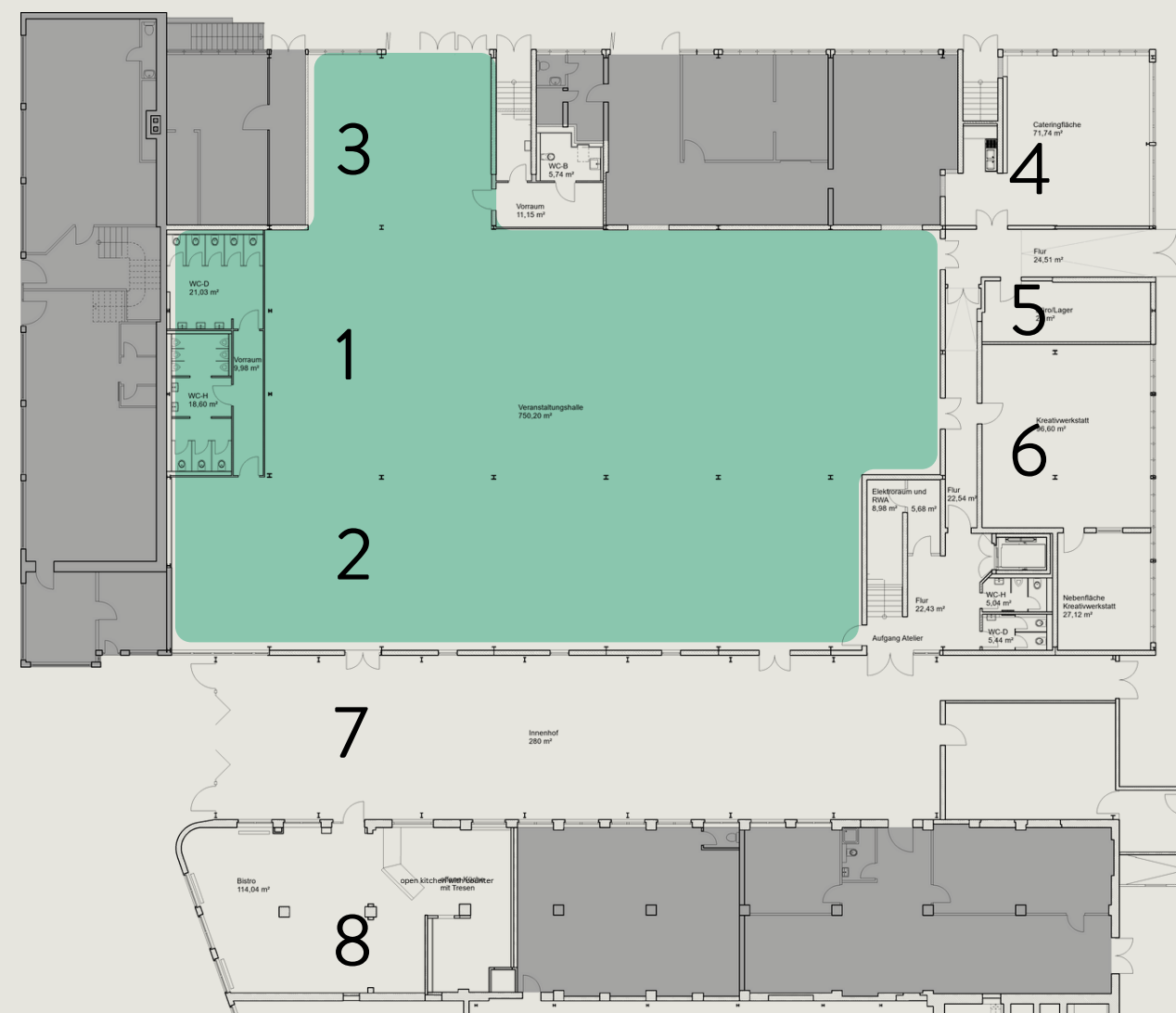
Our Partners

Hotels nearby

How to find us

Contact

The raumfabrik hall offers ample space for various event formats, totaling 820 sqm. Divided into three sections, alongside the central aisle measuring 387 sqm with a ceiling height of 9 meters, there are two smaller side aisles. These areas are 285 sqm and 76 sqm respectively, with a ceiling height of 3 meters. These diverse spaces are ideal for setting up amenities such as cloakrooms, catering areas, or lounges. For the easy transportation of materials and setups, there is a ground-level gate on the side of the event hall, suitable for vehicles. Notably, the hall benefits from generous natural light; however, it's also possible to fully darken the space without much effort.



1 Central aisle

2 Large aisle

3 Small aisle

4 Cateringfläche

5 Office/Store

6 Kreativwerkstatt

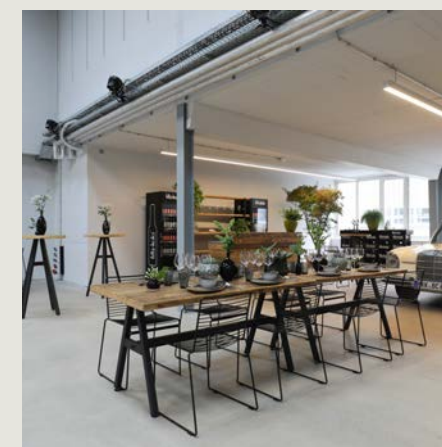
7 Courtyard

8 Bistro

CONTACT:

+49 (0) 69 210 85 444

info@raumfabrik-frankfurt.com



HALL raumfabrik

YOUR BENEFITS

CONTENT:

About us
Floor plan
Hall raumfabrik
Atelier
Courtyard
Cateringfläche
Kreativwerkstatt
Bistro
Room Plan
Our Partners
Hotels nearby
How to find us
Contact



Barrier-free event spaces on the ground floor



Lighting and sound equipment can be booked through our local technical partner



Internet/Wi-Fi (redundant system)



Good public transport connections



14 hanging points at 7 kN and 4 hanging points at 1.8 kN



4 entrances on the ground floor including a large gate (3.50 meters wide and 2.84 meters high; suitable for vehicle entry)



Additional backstage rooms on the ground floor and first floor



Separate room for catering preparation



13 high-power electrical connections



Blackout option for the roof and side windows



Polished concrete floor



Radiators and heating pipes, warmth circulated by ceiling fans

SEATING ARRANGMENTS



Theater
460 people



Classroom
400 people



U-Shape
200 people



Boardroom
600 people



Gala
430 people



Cocktail
600 people

CONTACT:

+49 (0) 69 210 85 444
info@raumfabrik-frankfurt.com

ATELIER

CONTENT:

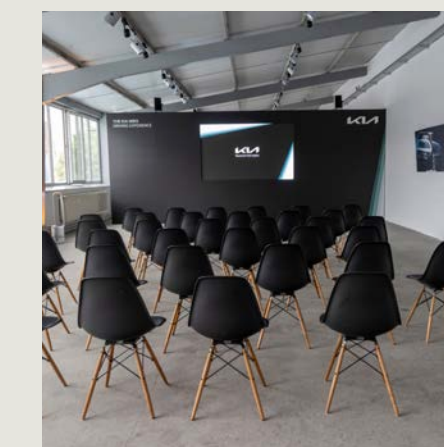
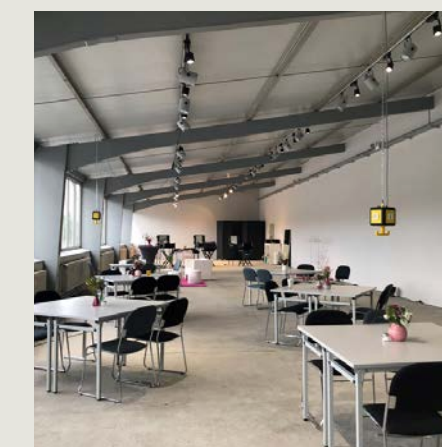
About us
Floor plan
Hall raumfabrik
Atelier
Courtyard
Cateringfläche
Kreativwerkstatt
Bistro
Room Plan
Our Partners
Hotels nearby
How to find us
Contact

On the first floor above the raumfabrik hall, there is an additional space well-suited for exhibitions, smaller workshops, or ancillary events. This room is separated from the rest of the raumfabrik hall and can be accessed via a staircase located at the rear end of the event hall. With a size of 285 sqm, it can accommodate seating for up to 100 people.



CONTACT:

+49 (0) 69 210 85 444
info@raumfabrik-frankfurt.com



ATELIER

YOUR BENEFITS

CONTENT:

About us
Floor plan
Hall raumfabrik
Atelier
Courtyard
Cateringfläche
Kreativwerkstatt
Bistro
Room Plan
Our Partners
Hotels nearby
How to find us
Contact



Lighting and sound equipment
can be booked through our local
technical partner



Internet/Wi-Fi (redundant
system)



Polished concrete
floor



Well-suited for photo and film
shoots due to high ceilings

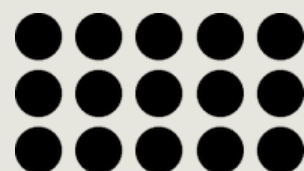


Hybrid events
easily facilitated

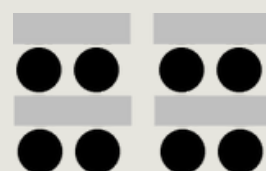


Additional backstage
rooms on the ground floor

SEATING ARRANGMENTS



Theater
100 people



Classroom
100 people



U-Shape
100 people



Boardroom
100 people



Cocktail
100 people

CONTACT:

+49 (0) 69 210 85 444
info@raumfabrik-frankfurt.com

COURTYARD

CONTENT:

About us

Floor plan

Hall raumfabrik

Atelier

Courtyard

Cateringfläche

Kreativwerkstatt

Bistro

Room Plan

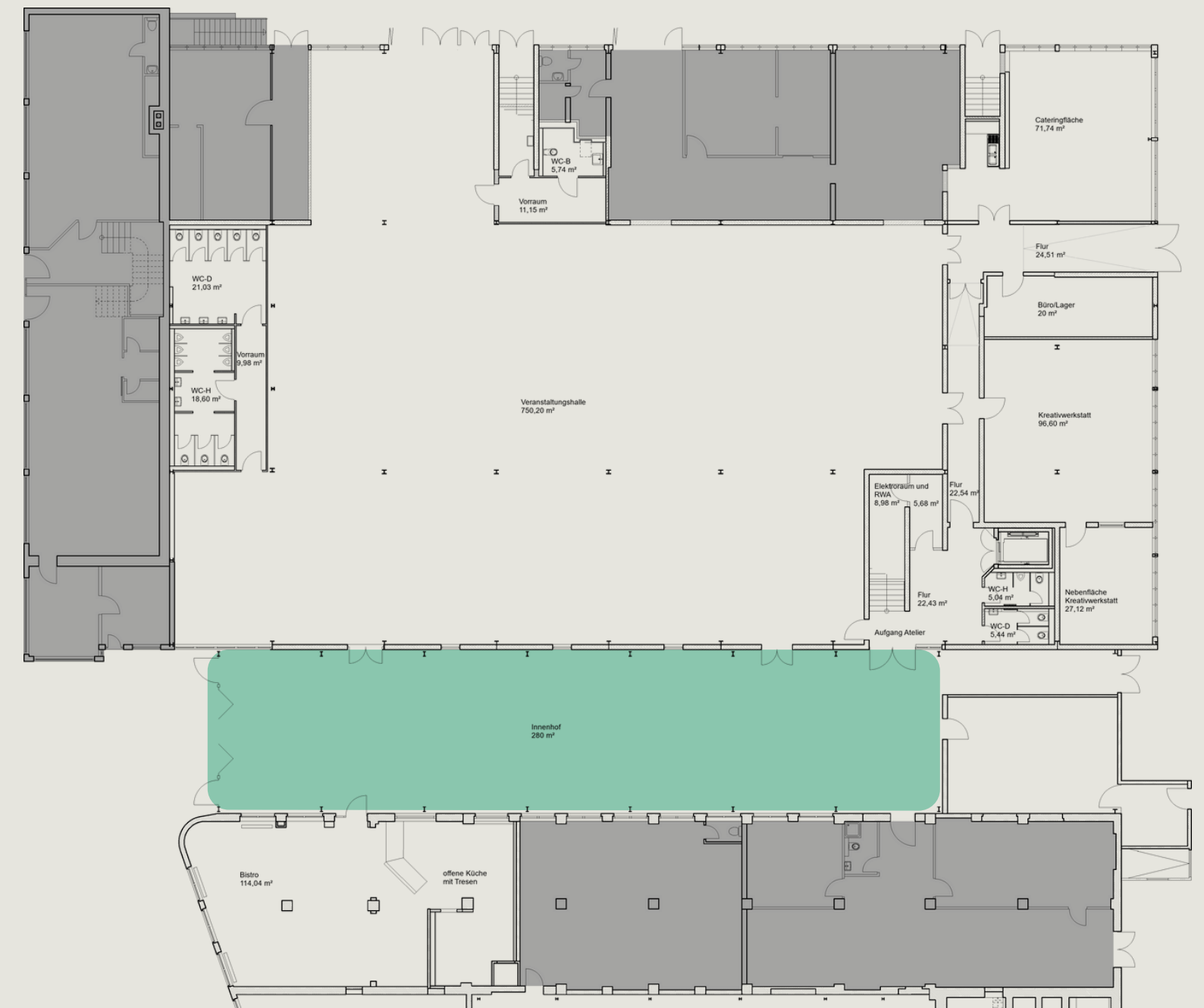
Our Partners

Hotels nearby

How to find us

Contact

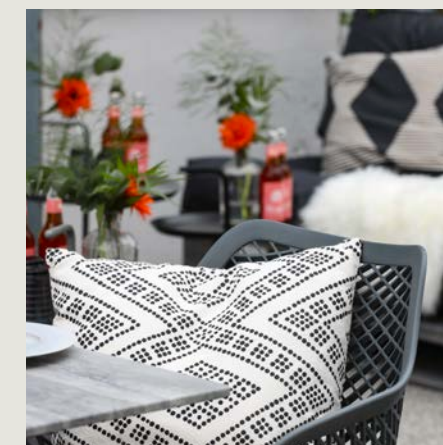
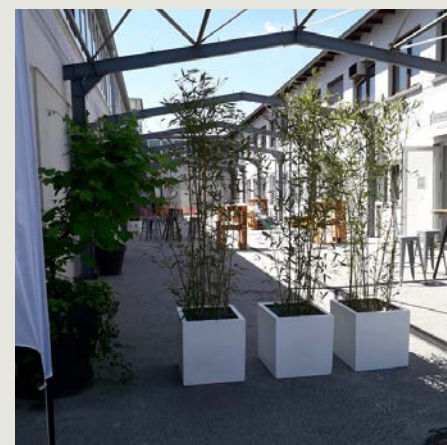
Our courtyard is situated directly adjacent to the event hall, providing space for receptions or outdoor breaks. Spanning 280 sqm, the courtyard features old metal pillars, adding to its unique industrial character. You are welcome to utilize the courtyard as an entrance area as well, as the entrance door to the event hall opens onto the courtyard.



CONTACT:

+49 (0) 69 210 85 444

info@raumfabrik-frankfurt.com



COURTYARD

YOUR BENEFITS

CONTENT:

About us

Floor plan

Hall raumfabrik

Atelier

Courtyard

Cateringfläche

Kreativwerkstatt

Bistro

Room Plan

Our Partners

Hotels nearby

How to find us

Contact



Located directly between the
hall and bistro



Hanging facilities available

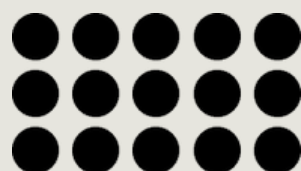


Internet/Wi-Fi (redundant
system)



Shade provided by
sunshades

SEATING ARRANGMENTS



Theater
250 people



Boardroom
150 people



Cocktail
400 people

CONTACT:

+49 (0) 69 210 85 444

info@raumfabrik-frankfurt.com

CATERINGFLÄCHE

CONTENT:

About us
Floor plan
Hall raumfabrik
Atelier
Courtyard
Cateringfläche
Kreativwerkstatt
Bistro
Room Plan
Our Partners
Hotels nearby
How to find us
Contact

Behind the raumfabrik hall is the Cateringfläche, spanning 71 sqm. This area is separated from the rest of the premises and features 4 high-power electrical and water connections. The location of the Cateringfläche ensures short distances to both the raumfabrik and the Kreativwerkstatt. Deliveries are made through a separate entrance, ensuring that events in the raumfabrik hall remain undisturbed.

YOUR BENEFITS



4 high-power and 19 standard electrical outlets



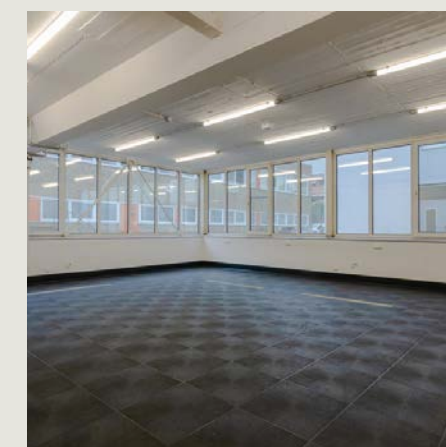
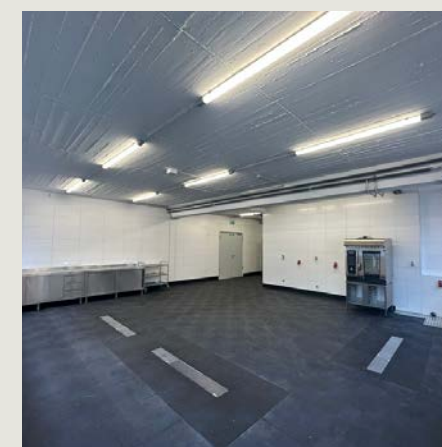
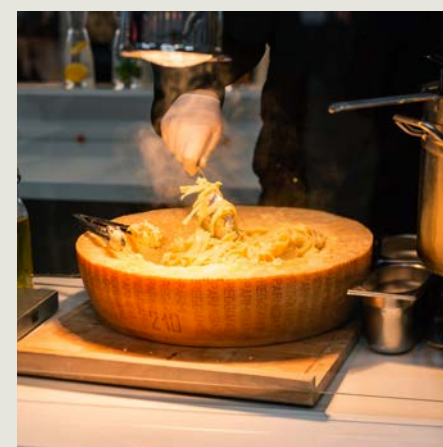
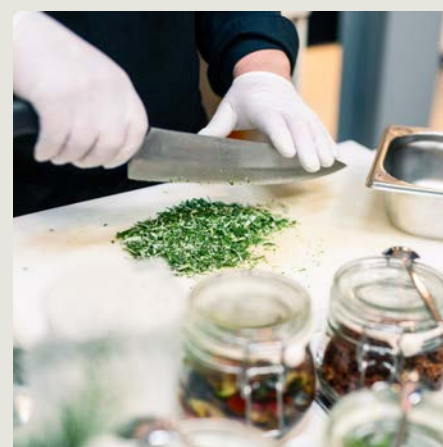
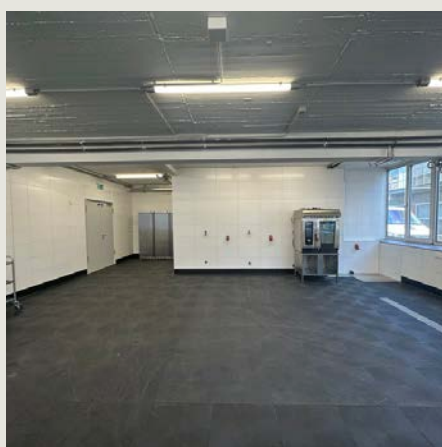
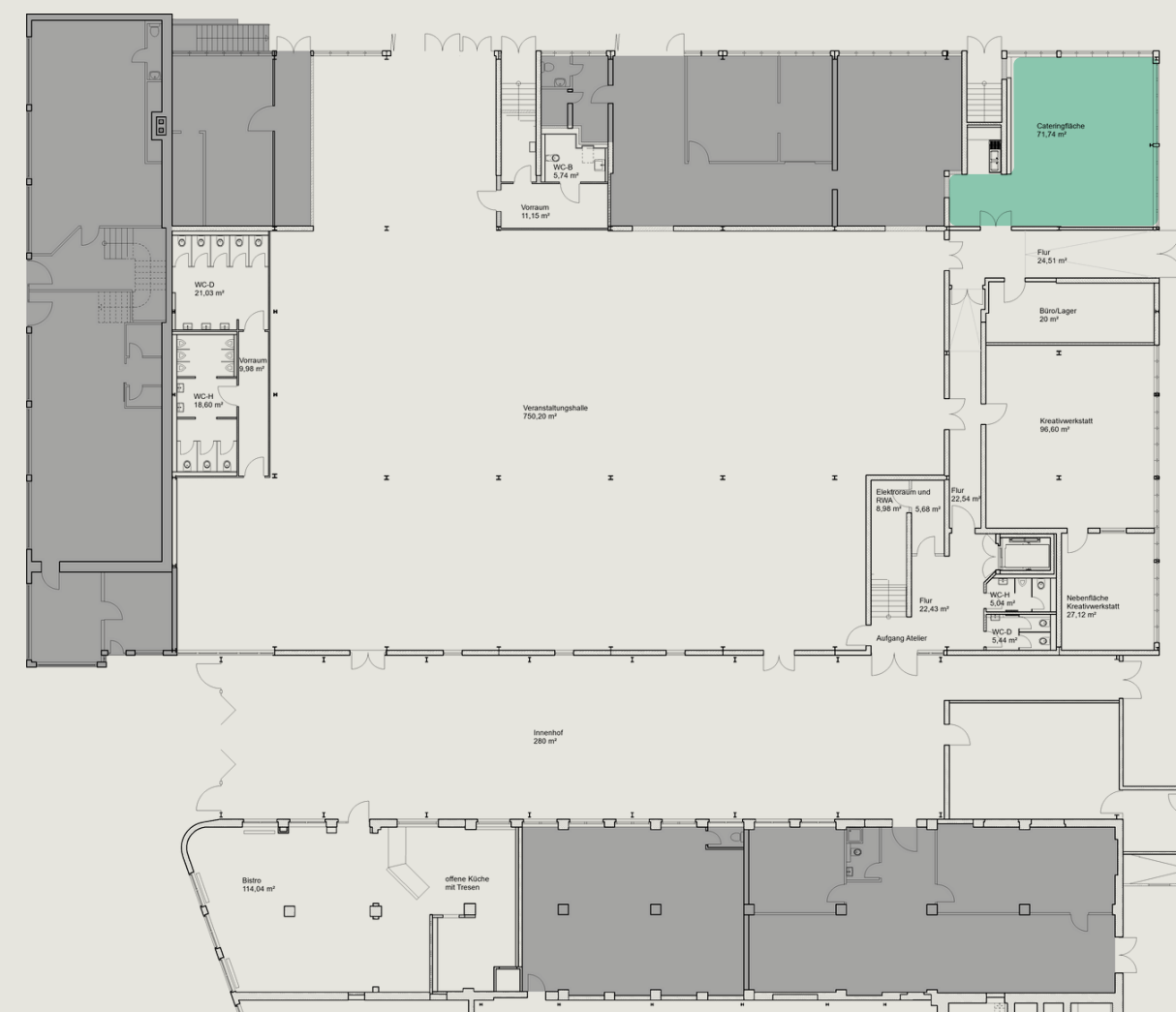
4 water connections



Private entrance



Short distances to the hall and the Kreativwerkstatt

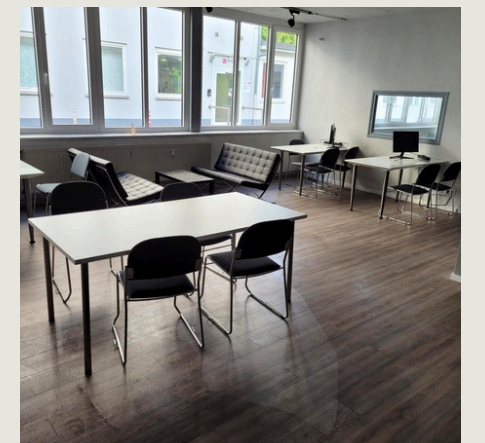


CONTACT:

+49 (0) 69 210 85 444
info@raumfabrik-frankfurt.com

Contact

Architectural floor plan of the first floor of a building. The plan shows a large central hall (Veranstaltungshalle) with a total area of 730.29 m². To the left of the hall is a staircase (Treppenhaus) and a small office (Büro) with an area of 11.15 m². To the right of the hall is a large office (Büro) with an area of 71.74 m². The bottom section of the plan features a large open kitchen (offene Küche mit Theke) with an area of 114.64 m², a staircase (Treppenhaus) with an area of 280 m², and a small office (Büro) with an area of 24.51 m². The plan also includes several restrooms (WC) and a kitchenette (Küchenbereich) with an area of 96.60 m². The overall layout is rectangular with various rooms and corridors.



info@raumfabrik-frankfurt.com

KREATIVWERKSTATT

YOUR BENEFITS

CONTENT:

About us
Floor plan
Hall raumfabrik
Atelier
Courtyard
Cateringfläche
Kreativwerkstatt
Bistro
Room Plan
Our Partners
Hotels nearby
How to find us
Contact



Internet/Wi-Fi (redundant
system)



Barrier-free event space
on the ground floor

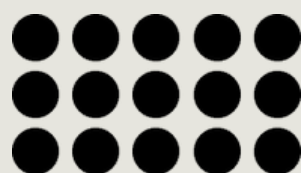


High-quality flooring

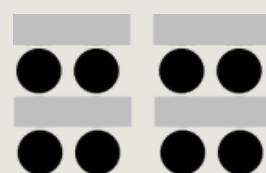


Short distances to the hall

SEATING ARRANGMENTS



Theater
60 people



Classroom
36 people



U-Shape
10 people



Boardroom
36 people



Cocktail
60 people

CONTACT:

+49 (0) 69 210 85 444

info@raumfabrik-frankfurt.com

BISTRO

CONTENT:

About us

Floor plan

Hall raumfabrik

Atelier

Courtyard

Cateringfläche

Kreativwerkstatt

Bistro

Room Plan

Our Partners

Hotels nearby

How to find us

Contact

CONTACT:

+49 (0) 69 210 85 444

info@raumfabrik-frankfurt.com

The bistro, spanning 115 sqm, is centrally located within the Heddernheimer Höfe premises and directly opposite the raumfabrik hall, separated only by a courtyard that can also be utilized. It can be rented separately or in addition to other spaces. The bistro can serve as a breakout area, for example, or by arrangement, as a more traditional dining venue, given its kitchen's extensive equipment, capable of preparing fine menus.

YOUR BENEFITS



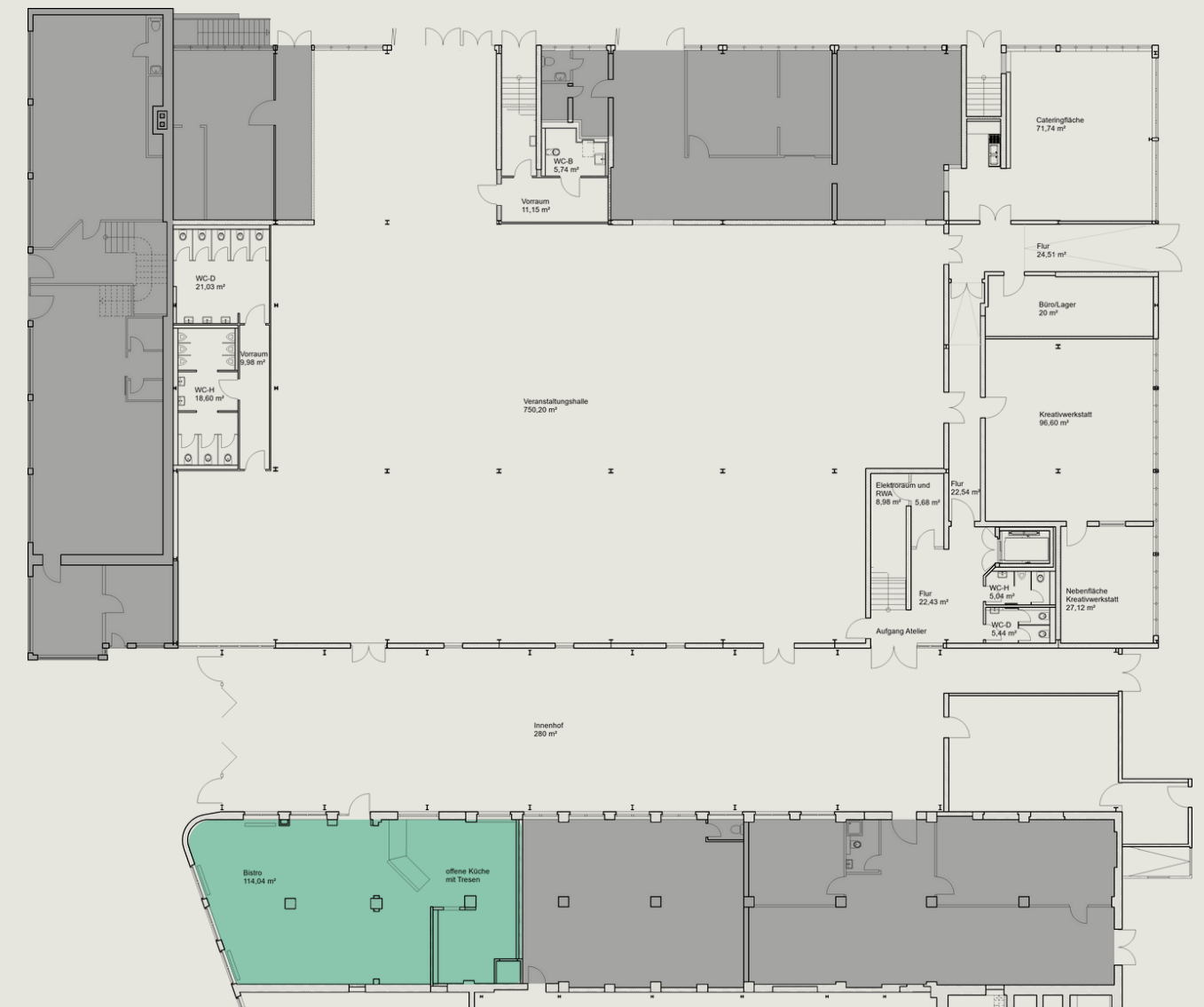
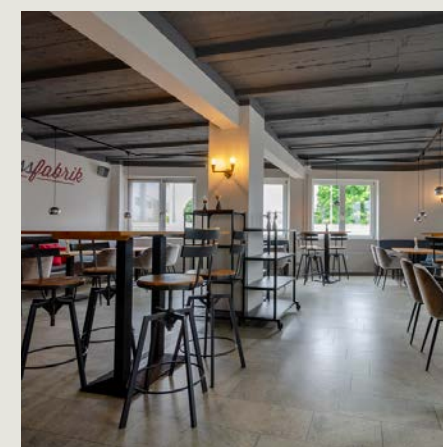
Internet/Wi-Fi
(redundant system)



Professionally and
comprehensively
equipped kitchen



Immediate proximity to the event hall and other spaces



Hall (743.13 sqm)

L 1: 8.82 m
W 1: 8.50 m
H: 2.57/2.94 m

L 2: 11.84 m
W 2: 32.70 m
H: 7.82 m - 8.78 m

L 3: 8.38 m
W 3: 33.50 m
H: 2.55 m/2.93 m

Courtyard (280 sqm)

L 1: 8.00 m
W 1: 35.00 m
H: 3.33 m - 4.10 m

Bistro: Guest room (76,80 sqm)

L 1: 7.68 m
W 1: 10.00 m
H: 2.17 m/2.42 m/2.75 m/
2.82 m

Cateringfläche (66.58 sqm)

L 1: 8.17 m
L 2: 2.44 m
L 3: 2.20 m
W 1: 6.95 m
W 2: 10.30 m
W 3: 1.06 m
W 4: 1.35 m
W 5: 0.65 m
H: 2.50 m/2.90 m

Office/Store (22.99 sqm)

L 1: 2.77 m
W 1: 8.30 m
H: 2.63 m/2.90 m

Kreativwerkstatt (74.52 sqm)

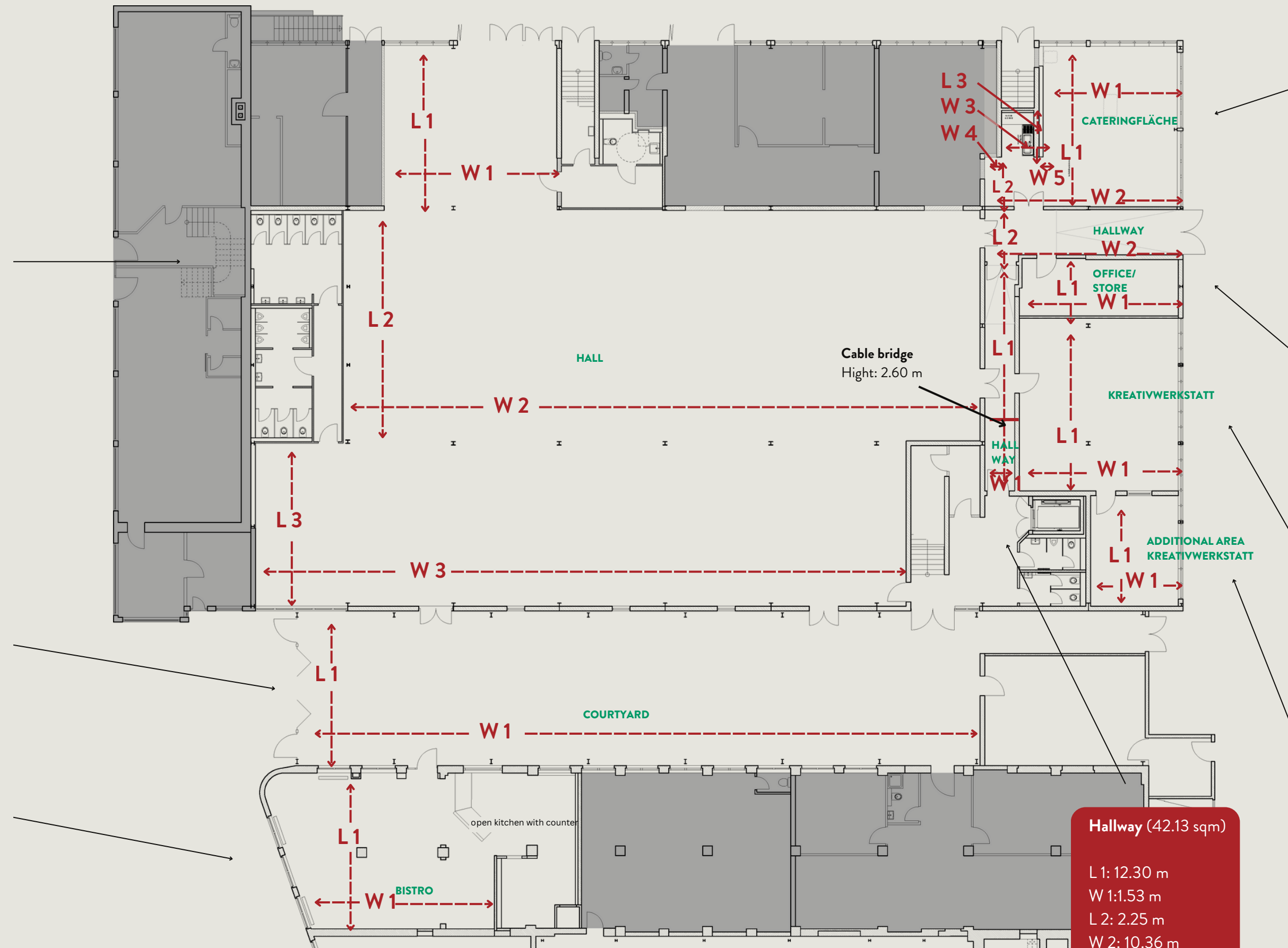
L 1: 9.00 m
W 1: 8.28 m
H: 2.56 m/2.95 m

**Additional Area
Kreativwerkstatt (26.06 sqm)**

L 1: 5.52 m
W 1: 4.72 m
H: 2.56 m/2.95 m

Hallway (42.13 sqm)

L 1: 12.30 m
W 1: 1.53 m
L 2: 2.25 m
W 2: 10.36 m
H: 2.94 m



Atelier
L1: 8.00 m
W1: 33.40 m
H: 2.80/4.20 m



OUR PARTNERS

CONTENT:

About us
Floor plan
Hall raumfabrik
Atelier
Courtyard
Cateringfläche
Kreativwerkstatt
Bistro
Room Plan
Our Partners
Hotels nearby
How to find us
Contact

CONTACT:

+49 (0) 69 210 85 444
info@raumfabrik-frankfurt.com

Below, we provide you with an overview of recommended service providers for your event at the raumfabrik Frankfurt. Whether it's an event or workshop, company celebration or exhibition, product presentation or film and photo production – choosing the right partners is crucial to the success of your event. In this overview, you will find selected recommendations from various areas such as catering, security, technology, or equipment. Our recommendations are intended to make your planning easier and help ensure that your event runs smoothly and successfully. Learn about the experts who meet your needs and select the right service providers for your event.

Feel free to contact us if we can offer further assistance.



OUR PARTNERS

CONTENT:

About us
Floor plan
Hall raumfabrik
Atelier
Courtyard
Cateringfläche
Kreativwerkstatt
Bistro
Room Plan
Our Partners
Hotels nearby
How to find us
Contact

TASTE OF NOW

TASTE OF NOW collaborates with a variety of talented chefs and personalities from the gastronomy industry, each bringing their own unique styles to events. This allows for the culinary design of an event to be tailored precisely to the preferences, guest profile, and budget of each individual client.

TASTE OF NOW GmbH

Edisonstraße 7, 60388 Frankfurt
Phone: +49 6109 70 676 43
Email: yummy@tasteofnow.com
www.tasteofnow.com



FLOW THE KITCHEN's strength lies in its comprehensive, high-performance portfolio of in-house offerings, including culinary options, equipment, decoration, bar services, live cooking, service, and much more. Products and suppliers are sourced locally. Their passion for good food is reflected in the modern, sophisticated, and sustainable culinary approach of freshly prepared dishes.

FLOW Food GmbH

Langer Kornweg 19-23,
65451 Kelsterbach
Phone: +49 6107 4056730
Email: events@flow-thekitchen.de
www.flow-thekitchen.de



Regardless of location or time, FR Catering is a reliable and competent partner. They successfully navigate the demands of diverse clients and anticipate every detail, knowing they only have one event to prove themselves as the right partner.

FR Event- und MesseCatering GmbH

Georg-Heinrich-Appl-Straße 2,
97234 Reichenberg/Klingholz
Phone: +49 93 34 977 91 0
Email: info@frcatering.de
www.frcatering.de

CONTACT:

+49 (0) 69 210 85 444
info@raumfabrik-frankfurt.com

OUR PARTNERS

CONTENT:

About us
Floor plan
Hall raumfabrik
Atelier
Courtyard
Cateringfläche
Kreativwerkstatt
Bistro
Room Plan
Our Partners
Hotels nearby
How to find us
Contact



Our technical partner, sound for friends, is also located on the premises of the Heddernheimer Höfe. Their warehouse holds everything necessary for the successful execution of an event, ensuring short distances and convenience.

sound for friends GmbH

Heddernheimer Landstraße 145,
60439 Frankfurt
Phone: +49 69 348 235 00
Email: mail@soundforfriends.de
www.sffm.de



As event outfitters, Party Rent takes care of the staging of an event. This involves creating the atmosphere as well as the personalized concept that underpins it and meaningfully underscores the communication goals. The product portfolio includes event equipment such as furniture, tableware, and kitchen appliances, as well as decorations, carpets, and flooring options.

Rent.Group Frankfurt

Daimlerstraße 3, 61239 Ober-Mörlen
Phone: +49 69 56003113
Email: frankfurt@rent.group
www.party.rent/de/eventverleih-frankfurt

CONTACT:

+49 (0) 69 210 85 444
info@raumfabrik-frankfurt.com

HOTELS NEARBY

CONTENT:

About us
Floor plan
Hall raumfabrik
Atelier
Courtyard
Cateringfläche
Kreativwerkstatt
Bistro
Room Plan
Our Partners
Hotels nearby
How to find us
Contact

CONTACT:

+49 (0) 69 210 85 444
info@raumfabrik-frankfurt.com

RELEXA HOTEL FRANKFURT/MAIN

Lurgiallee 2, 60439 Frankfurt
Phone: +49 69 95778 0
Email: frankfurt.main@relexa-hotel.de
www.relexa-hotel-frankfurt.de
Distance: 1 km
Accessibility: 15 min. by foot
Number of rooms: 163

STEIGENBERGER FRANKFURTER HOF

Am Kaiserplatz, 60311 Frankfurt
Phone: +49 69 215-02
Email: rezeption@frankfurter-hof.steigenberger.de
www.frankfurter-hof.steigenberger.de
Distance: 9 km
Accessibility: 18 min. by public transport
Number of rooms: 267 plus 36 suites

HOTEL HEDDERNHEIMER HOF

Hedderzheimer Landstr. 82, 60439 Frankfurt
Phone: +49 69 58 33 44
Email: info@heddernheimerhof.de
www.heddernheimerhof.eu/de
Distance: 600 m
Accessibility: 10 min. by foot
Number of rooms: 30

HILTON FRANKFURT CITY CENTRE

Hochstraße 4, 60313 Frankfurt
Phone: +49 69 133 800
Email: info.frankfurt@hilton.com
www.hilton.com/de/hotels/frahitw-hilton-frankfurt-city-centre/
Distance: 9 km
Accessibility: 21 min. by public transport
Number of rooms: 342

B&B HOTEL FRANKFURT-NORD

Heinrich-Lanz-Allee 3 , 60437 Frankfurt
Phone: +49 69 950904-0
Email: frankfurt-nord@hotelbb.com
www.hotel-bb.com/de/hotel/frankfurt-nord
Distance: 7 km
Accessibility: 30 min. by underground U9
12 min. by car

ADINA APARTMENT HOTEL FRANKFURT NEUE OPER

Wilhelm-Leuschner-Straße 6, 60329 Frankfurt
Phone: + 49 69 2474740
Email: frankfurtno@adina.eu
www.adinahotels.com/de/apartments/frankfurt-neue-oper/
Distance: 9 km
Accessibility: 23 min. by public transport
Number of rooms: 134

HOTELS NEARBY

CONTENT:

About us
Floor plan
Hall raumfabrik
Atelier
Courtyard
Cateringfläche
Kreativwerkstatt
Bistro
Room Plan
Our Partners
Hotels nearby
How to find us
Contact

CONTACT:

+49 (0) 69 210 85 444
info@raumfabrik-frankfurt.com

FLEMING'S SELECTION HOTEL CITY FRANKFURT

Eschenheimer Tor 2, 60318 Frankfurt
Phone: +49 69 427 232-0
Email: frankfurt-city@flemings-hotels.com
www.flemings-hotels.com/frankfurt-city-selection-hotel

Distance: 8 km
Accessibility: 16 min. by public transport
Number of rooms: 206

HYATT HOUSE FRANKFURT ESCHBORN

Frankfurter Straße 77 , 65760 Eschborn
Phone: +49 6196 5824 1234
www.hyatt.com/hyatt-house/de-DE/fraxf-hyatt-house-frankfurt-eschborn

Distance: 7 km
Accessibility: 13 min. by car
Number of rooms: 190

DORINT HOTEL FRANKFURT/OBERURSEL

Königsteiner Straße 29, 61440 Oberursel
Phone: +49 6171 2769-0
Email: info.oberursel@dorint.com
www.hotel-frankfurt-oberursel.dorint.com/de

Distance: 10 km
Accessibility: 20 min. by car
Number of rooms: 140

H+ HOTEL FRANKFURT ESCHBORN

Frankfurter Str. 5 , 65760 Eschborn
Phone: +49 6196 4999-0
Email: eschborn@h-hotels.com
www.h-hotels.com/de/hplus/hotels/hplus-hotel-frankfurt-eschborn

Distance: 12 km
Accessibility: 13 min. by car
Number of rooms: 215

ELAYA HOTEL FRANKFURT OBERURSEL

Zimmersmühlenweg 35,
61440 Oberursel (Taunus)
Phone: +49 6171 5000
Email: frankfurt-oberursel@elaya-hotels.com
www.elaya-hotels.com/frankfurt-oberursel

Distance: 6 km
Accessibility: 10 min. by car
Number of rooms: 220

MARITIM HOTEL BAD HOMBURG

Ludwigstraße 3, 61348 Bad Homburg v. d. H.
Phone: 0800 3386172
Email: info.hom@maritim.de
www.maritim.de/de/hotels/deutschland/hotel-bad-homburg/unser-hotel

Distance: 11 km
Accessibility: 20 min. by car
Number of rooms: 148

HOW TO FIND US

CONTENT:

About us
Floor plan
Hall raumfabrik
Atelier
Courtyard
Cateringfläche
Kreativwerkstatt
Bistro
Room Plan
Our Partners
Hotels nearby
How to find us
Contact

CONTACT:

+49 (0) 69 210 85 444
info@raumfabrik-frankfurt.com

Navigation Address

Heddernheimer Landstraße 155,
60439 Frankfurt am Main

Distances

- 15 minutes – Frankfurt city centre
- 15 minutes – Frankfurt airport
- 12 minutes – Eschborn
- 5 minutes – Merton district

By Car

You can reach us by car via the A3, A5, and A66 motorways.

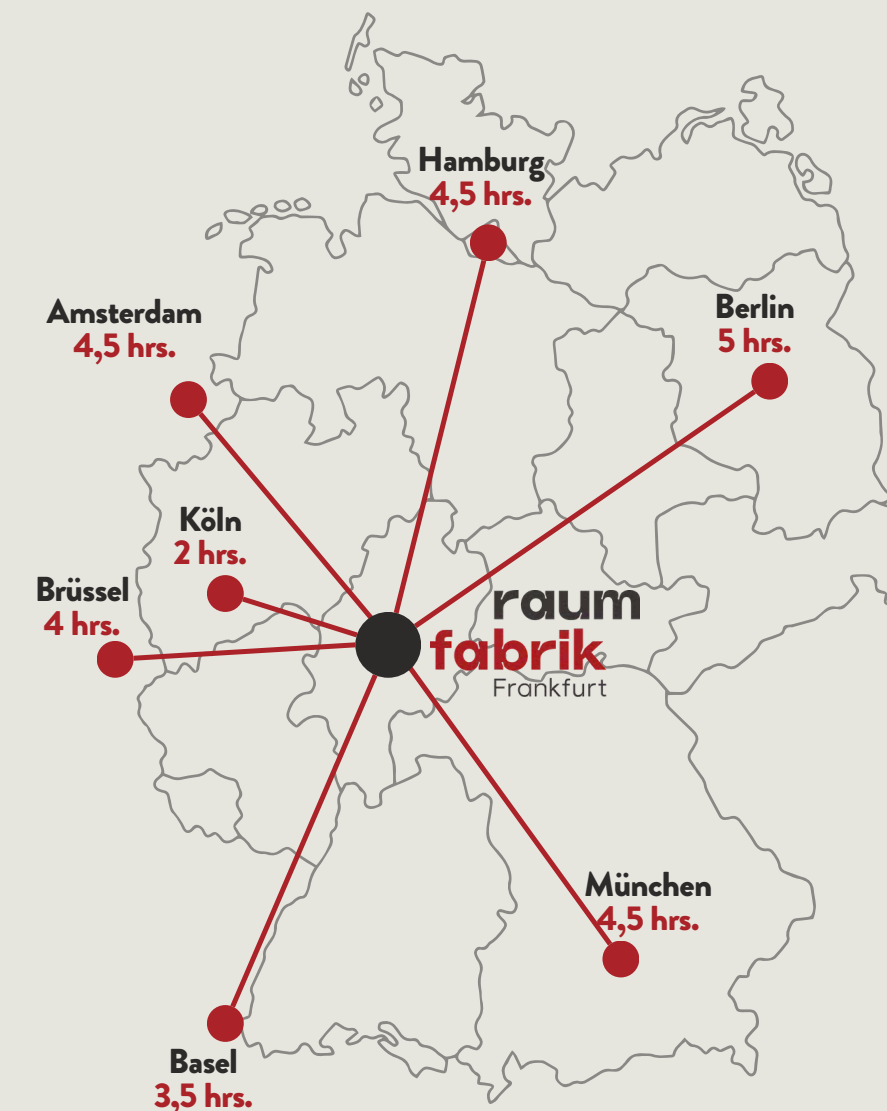
We recommend arriving by public transportation.

By bus and train

- U1 + U9 Station Heddernheimer Landstraße (1 minute walk)
- U3 + U8 Station Wiesenu. (10 minutes walk)
- Bus 29 + N3 Station Oberschelder Weg (5 minutes walk)

Parking

- Limited number of parking spaces on-site
- Access with turning circle for buses and trucks



Traveling by train

Operating company

raumfabrik Frankfurt GmbH
Hedderheimer Landstraße 155
60439 Frankfurt am Main
Phone: +49 69 210 85 444
info@raumfabrik-frankfurt.com

**Contact**

Managing Director: Nicole Harloff
Mobile: +49 172 429 1105
n.harloff@raumfabrik-frankfurt.com

**Contact**

Office Management: Zlata Ruzek
Mobile: +49 175 22 55 014
z.ruzek@raumfabrik-frankfurt.com

**Contact**

Project Management: Moritz Harloff
Mobile: +49 151 227 10 200
m.harloff@raumfabrik-frankfurt.com