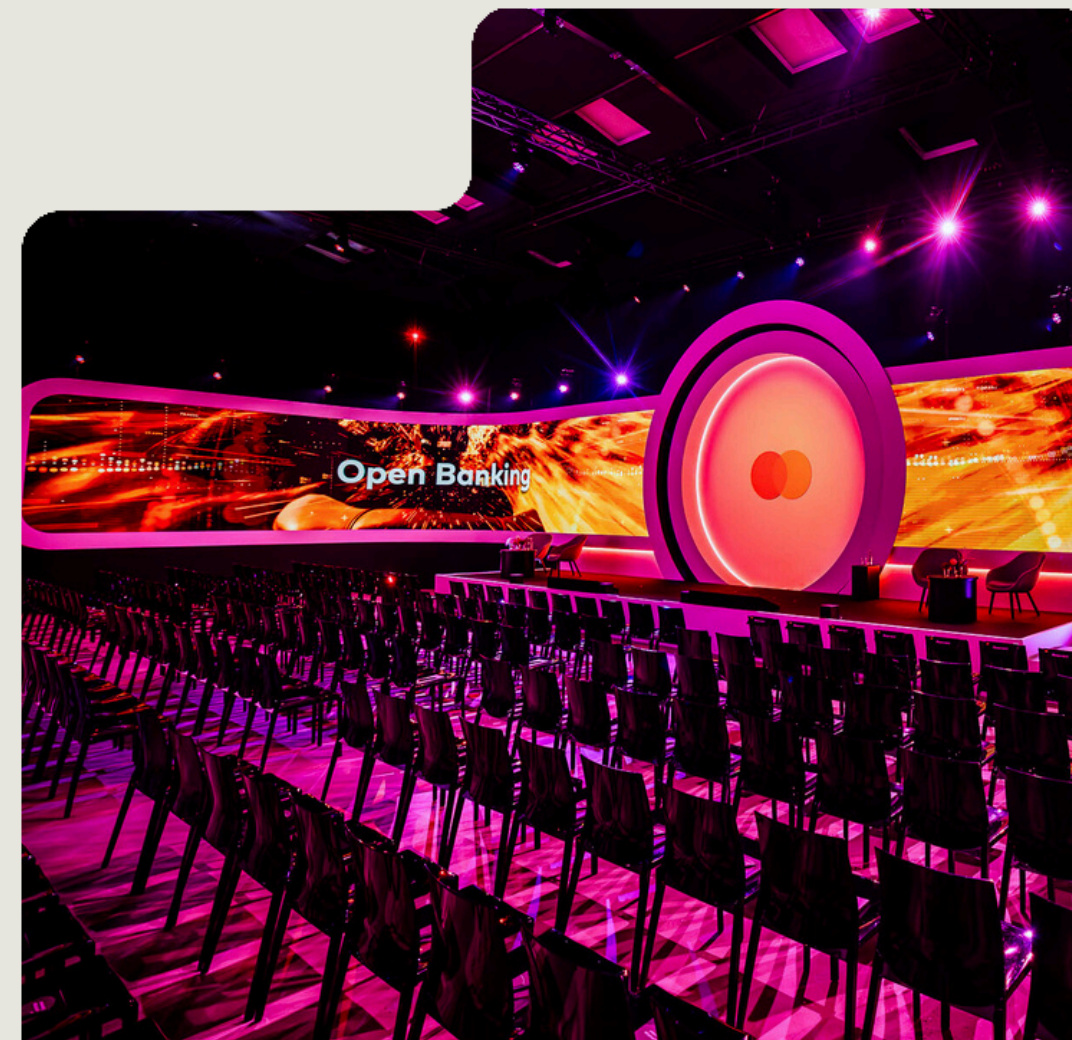


raum
fabrik
Frankfurt

EXPOSÉ



ABOUT US



CONTENT:

[About us](#)

[Floor plan](#)

[Hall raumfabrik](#)

[Atelier](#)

[Werkskantine,](#)

[Eckraum,](#)

[Brückenraum](#)

[Courtyard](#)

[Cateringfläche](#)

[Kreativwerkstatt](#)

[Bistro](#)

[Room Plan](#)

[Our Partners](#)

[Hotels nearby.](#)

[How to find us](#)

[Contact](#)

The raumfabrik Frankfurt, a former metalware manufacturing hall from the 1960s, is located within the premises of the Heddernheimer Höfe. This is an area spanning over 11,000 sqm in the northwest of Frankfurt, offering a diverse array of art, culture, and commercial spaces.

Educational institutions, artists, craftspeople, musicians, along with the event spaces of raumfabrik Frankfurt, collectively make the Heddernheimer Höfe a cultural hub within the neighborhood of Heddernheim.

You can get a first impression in our [360° tour](#).

CONTACT:

+49 (0) 69 210 85 444

info@raumfabrik-frankfurt.com

OUR HISTORY

CONTENT:

[About us](#)

[Floor plan](#)

[Hall raumfabrik](#)

[Atelier](#)

[Werkskantine,](#)

[Eckraum,](#)

[Brückenraum](#)

[Courtyard](#)

[Cateringfläche](#)

[Kreativwerkstatt](#)

[Bistro](#)

[Room Plan](#)

[Our Partners](#)

[Hotels nearby](#)

[How to find us](#)

[Contact](#)

USE AS A WAREHOUSE

Production in Heddernheim ceased in the 1970s, and the factory was subsequently rented out as a warehouse.

OPENING OF raumfabrik FRANKFURT

The event hall opened in April 2019 and plans expansions with the addition of a bistro & catering service.

COMING SOON



CONTACT:

+49 (0) 69 210 85 444

info@raumfabrik-frankfurt.com

A FLEXIBLE LOCATION

CONTENT:

[About us](#)

[Floor plan](#)

[Hall raumfabrik](#)

[Atelier](#)

[Werkskantine,](#)

[Eckraum,](#)

[Brückenraum](#)

[Courtyard](#)

[Cateringfläche](#)

[Kreativwerkstatt](#)

[Bistro](#)

[Room Plan](#)

[Our Partners](#)

[Hotels nearby](#)

[How to find us](#)

[Contact](#)

Spanning over 2,100 sqm, raumfabrik Frankfurt is located right in the heart of the Heddernheimer Höfe complex. It is an event venue featuring eight event spaces and service areas. The various spaces, including a separate courtyard, can be rented for a wide range of events.

raumfabrik Frankfurt is the perfect venue for exclusive events such as exhibitions, corporate events, company parties, workshops, and automotive presentations, offering plenty of space for creative ideas.

AT FIRST GLANCE:

- 820 sqm of barrier-free, drivable former factory hall
- Ceiling height of 9 meters
- 6 additional rooms ranging from 60 sqm to 275 sqm, suitable for various purposes such as back-office spaces
- Large adjacent courtyard (280 sqm)
- All areas are wheelchair accessible
- Walls and floor suitable for projections
- Capability to host a wide range of event formats
- On-site technical support partner
- Easily accessible from Frankfurt city center by car within 15 minutes
- Direct connection to the city center via the U1/U9 subway lines (20 min.)

CONTACT:

+49 (0) 69 210 85 444

info@raumfabrik-frankfurt.com

GROUND FLOOR PLAN

CONTENT:

[About us](#)

[Floor plan](#)

[Hall raumfabrik](#)

[Atelier](#)

[Werkskantine,](#)

[Eckraum,](#)

[Brückenraum](#)

[Courtyard](#)

[Cateringfläche](#)

[Kreativwerkstatt](#)

[Bistro](#)

[Room Plan](#)

[Our Partners](#)

[Hotels nearby.](#)

[How to find us](#)

[Contact](#)

CONTACT:

+49 (0) 69 210 85 444

info@raumfabrik-frankfurt.com

GROUND FLOOR PLAN HALL

HEDDERNHEIMER LANDSTRASSE 153

60439 FRANKFURT/M.

[Original plan for download](#)



CONTENT:

[About us](#)

[Floor plan](#)

[Hall raumfabrik](#)

[Atelier](#)

[Werkskantine,](#)

[Eckraum,](#)

[Brückenraum](#)

[Courtyard](#)

[Cateringfläche](#)

[Kreativwerkstatt](#)

[Bistro](#)

[Room Plan](#)

[Our Partners](#)

[Hotels nearby](#)

[How to find us](#)

[Contact](#)

CONTACT:

+49 (0) 69 210 85 444

info@raumfabrik-frankfurt.com

UPPER FLOOR PLAN

UPPER FLOOR PLAN HALLE

HEDDERNHEIMER LANDSTRASSE 153

60439 FRANKFURT/M.

[Original plan for download](#)



HALL raumfabrik

CONTENT:

[About us](#)

[Floor plan](#)

Hall raumfabrik

[Atelier](#)

[Werkskantine,](#)

[Eckraum,](#)

[Brückenraum](#)

[Courtyard](#)

[Cateringfläche](#)

[Kreativwerkstatt](#)

[Bistro](#)

[Room Plan](#)

[Our Partners](#)

[Hotels nearby](#)

[How to find us](#)

[Contact](#)

The raumfabrik hall offers ample space for various event formats, totaling 820 sqm. Divided into three sections, alongside the central aisle measuring 387 sqm with a ceiling height of 9 meters, there are two smaller side aisles. These areas are 285 sqm and 76 sqm respectively, with a ceiling height of 3 meters. These diverse spaces are ideal for setting up amenities such as cloakrooms, catering areas, or lounges. For the easy transportation of materials and setups, there is a ground-level gate on the side of the event hall, suitable for vehicles. Notably, the hall benefits from generous natural light; however, it's also possible to fully darken the space without much effort.



1 Central aisle

2 Large aisle

3 Small aisle

4 Cateringfläche

5 Office/Store

6 Kreativwerkstatt

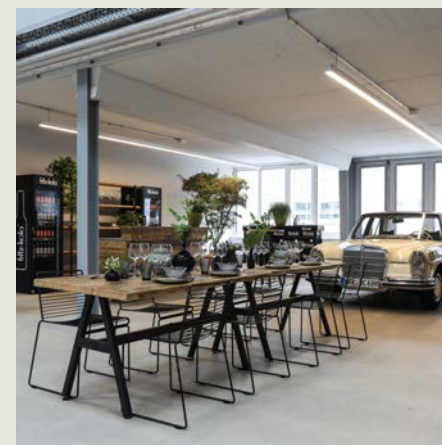
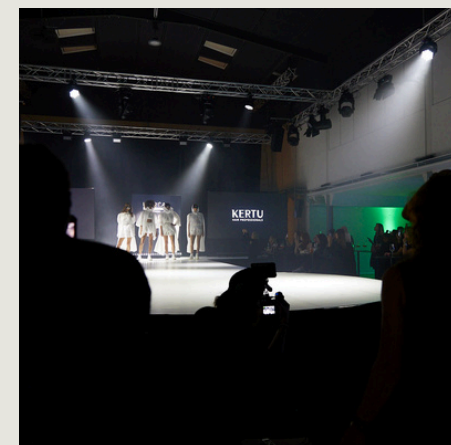
7 Courtyard

8 Bistro

CONTACT:

+49 (0) 69 210 85 444

info@raumfabrik-frankfurt.com



HALL raumfabrik

YOUR BENEFITS

CONTENT:

[About us](#)

[Floor plan](#)

Hall raumfabrik

[Atelier](#)

[Werkskantine,](#)

[Eckraum,](#)

[Brückenraum](#)

[Courtyard](#)

[Cateringfläche](#)

[Kreativwerkstatt](#)

[Bistro](#)

[Room Plan](#)

[Our Partners](#)

[Hotels nearby](#)

[How to find us](#)

[Contact](#)



Barrier-free event spaces on the ground floor



Lighting and sound equipment can be booked through our local technical partner



Internet/Wi-Fi (redundant system)



Good public transport connections



14 hanging points at 7 kN and 4 hanging points at 1.8 kN



4 entrances on the ground floor including a large gate (3.50 meters wide and 2.84 meters high; suitable for vehicle entry)



500 kg/m² floor load



Separate room for catering preparation



14 high-power electrical connections



Blackout option for the roof and side windows

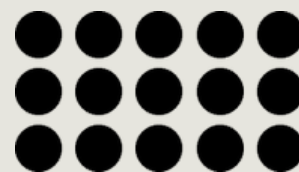


Polished concrete floor

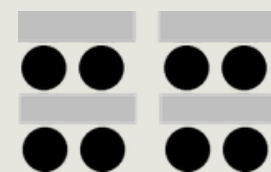


Elevator for transporting people and materials to the 1st floor (internal dimensions: 1.1 m wide and 2.1 m deep, rated capacity: 1 ton)

SEATING ARRANGMENTS



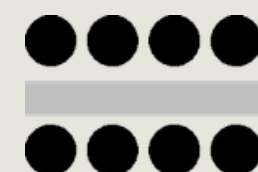
Theater
460 people



Classroom
400 people



U-Shape
200 people



Boardroom
600 people



Gala
430 people



Cocktail
600 people

CONTACT:

+49 (0) 69 210 85 444

info@raumfabrik-frankfurt.com

[ADDITIONAL TECHNICAL INFORMATION](#)

[officially approved seating plans](#)

ATELIER

On the first floor above the raumfabrik hall, there is an additional space well-suited for exhibitions, smaller workshops, or ancillary events. This room is separated from the rest of the raumfabrik hall and can be accessed via a staircase located at the rear end of the event hall. With a size of 270 sqm, it can accommodate seating for up to 150 people.



CONTENT:

[About us](#)

[Floor plan](#)

[Hall raumfabrik](#)

Atelier

[Werkskantine,](#)

[Eckraum,](#)

[Brückenraum](#)

[Courtyard](#)

[Cateringfläche](#)

[Kreativwerkstatt](#)

[Bistro](#)

[Room Plan](#)

[Our Partners](#)

[Hotels nearby](#)

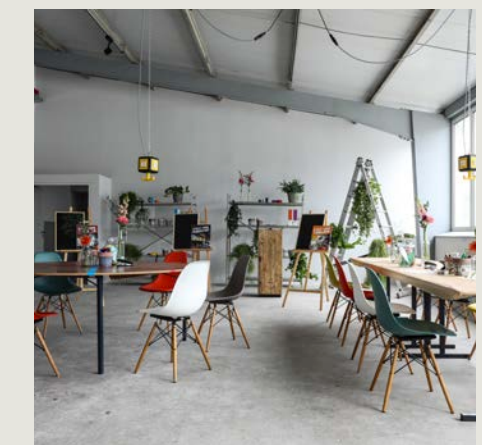
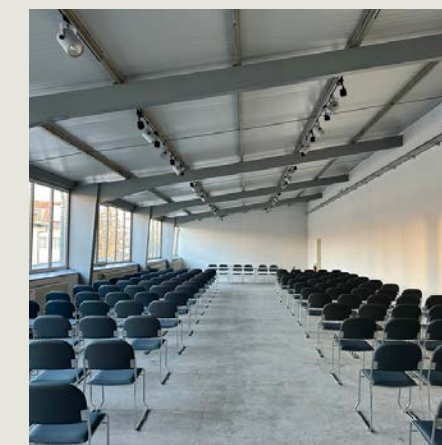
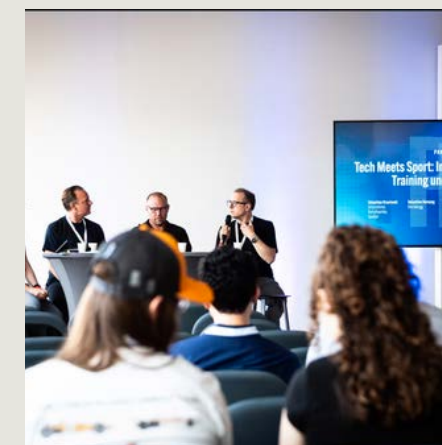
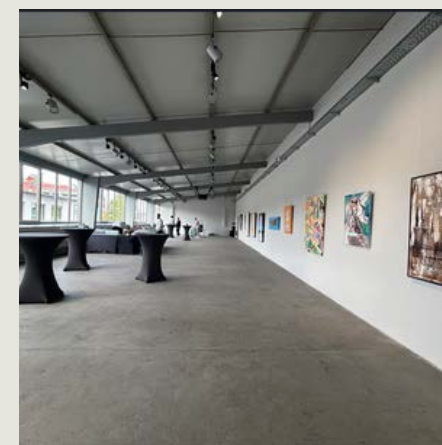
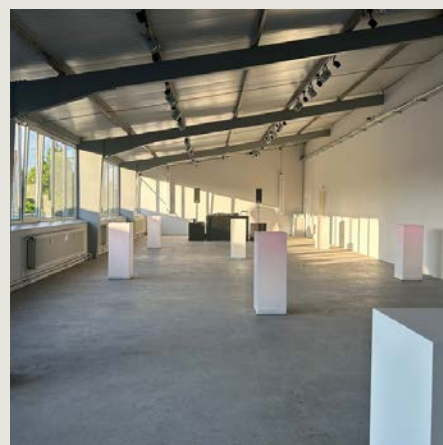
[How to find us](#)

[Contact](#)

CONTACT:

+49 (0) 69 210 85 444

info@raumfabrik-frankfurt.com



ATELIER

YOUR BENEFITS

CONTENT:

[About us](#)

[Floor plan](#)

[Hall raumfabrik](#)

Atelier

[Werkskantine,](#)

[Eckraum,](#)

[Brückenraum](#)

[Courtyard](#)

[Cateringfläche](#)

[Kreativwerkstatt](#)

[Bistro](#)

[Room Plan](#)

[Our Partners](#)

[Hotels nearby](#)

[How to find us](#)

[Contact](#)



Lighting and sound equipment can be booked through our local technical partner



Internet/Wi-Fi (redundant system)



Polished concrete floor



accessible event space



Well-suited for photo and film shoots due to high ceilings



Hybrid events easily facilitated

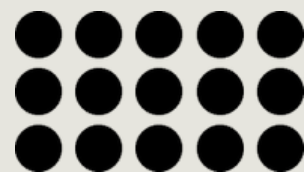


Additional backstage rooms on the ground floor

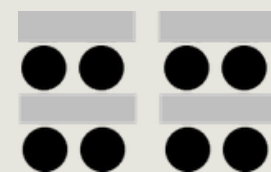


Elevator for transporting people and materials to the 1st floor

SEATING ARRANGMENTS



Theater
150 people



Classroom
100 people



U-Shape
100 people



Boardroom
100 people



Cocktail
150 people

CONTACT:

+49 (0) 69 210 85 444

info@raumfabrik-frankfurt.com

[ADDITIONAL TECHNICAL INFORMATION](#)

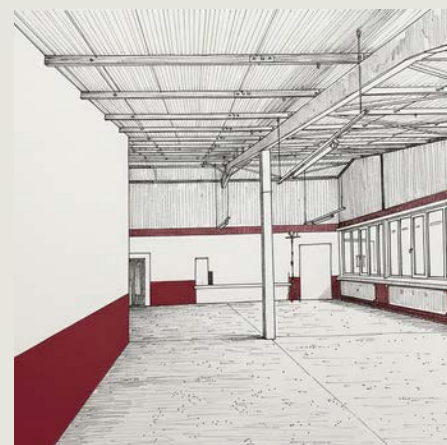
WERKSKANTINE, ECKRAUM, BRÜCKENRAUM

INHALT:

- [Über Uns](#)
- [Grundrisse](#)
- [Halle raumfabrik](#)
- [Atelier](#)
- [Werkskantine,](#)**
- [Eckraum,](#)**
- [Brückenraum](#)**
- [Innenhof](#)
- [Cateringfläche](#)
- [Kreativwerkstatt](#)
- [Bistro](#)
- [Raumplan](#)
- [Unsere Partner](#)
- [Hotels in der Nähe](#)
- [Anfahrt](#)
- [Kontakt](#)

The Werkskantine, the Eckraum, and the Brückenraum on the first floor of raumfabrik Frankfurt add to the space with areas that are ideal, for example, as breakout spaces or for workshops and conferences. They are easily accessible via both the stairs and the elevator. With sizes of 160 sqm, 60 sqm, and 60 sqm, they cover a spectrum that the location has previously lacked—manageable, clearly defined units for smaller groups and parallel events.

The areas are currently being finalized, but can still be used in the meantime.



Werkskantine



Eckraum



Brückenraum

CONTACT:

+49 (0) 69 210 85 444
info@raumfabrik-frankfurt.com

COURTYARD

CONTENT:

[About us](#)

[Floor plan](#)

[Hall raumfabrik](#)

[Atelier](#)

[Werkskantine,](#)

[Eckraum,](#)

[Brückenraum](#)

[Courtyard](#)

[Cateringfläche](#)

[Kreativwerkstatt](#)

[Bistro](#)

[Room Plan](#)

[Our Partners](#)

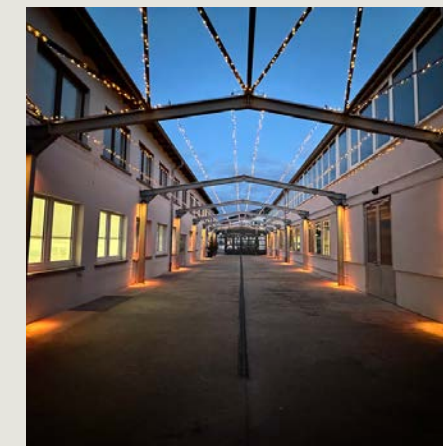
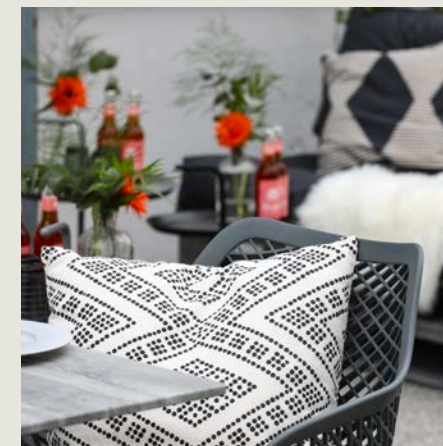
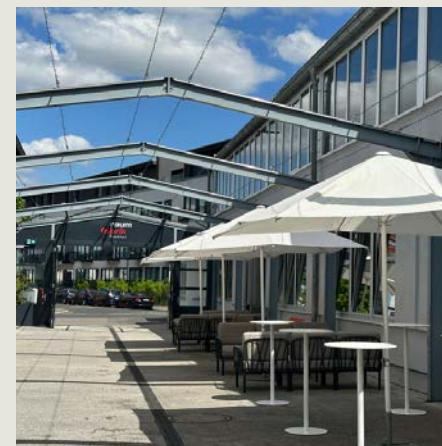
[Hotels nearby](#)

[How to find us](#)

[Contact](#)

Our courtyard is located right next to the event hall and offers space for receptions or outdoor breaks. It also serves as an entrance area, as guests can access the hall directly from here.

The courtyard measures 280 sqm and, with its old metal pillars, is another unique feature with an industrial character. The pillars are equipped with RGB downlights, allowing for lighting in brand colors.



CONTACT:

+49 (0) 69 210 85 444

info@raumfabrik-frankfurt.com

COURTYARD

YOUR BENEFITS



Located directly between the hall and bistro



Hanging facilities available



Internet/Wi-Fi (redundant system)



Outdoor lighting available in brand colors

CONTENT:

[About us](#)

[Floor plan](#)

[Hall raumfabrik](#)

[Atelier](#)

[Werkskantine,](#)

[Eckraum,](#)

[Brückenraum](#)

Courtyard

[Cateringfläche](#)

[Kreativwerkstatt](#)

[Bistro](#)

[Room Plan](#)

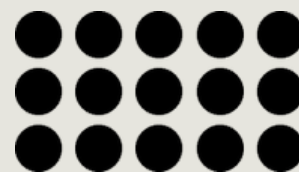
[Our Partners](#)

[Hotels nearby](#)

[How to find us](#)

[Contact](#)

SEATING ARRANGMENTS



Theater
250 people



Boardroom
150 people



Cocktail
400 people

CONTACT:

+49 (0) 69 210 85 444

info@raumfabrik-frankfurt.com

[ADDITIONAL TECHNICAL INFORMATION](#)

CATERINGFLÄCHE

Behind the raumfabrik hall is the Cateringfläche, spanning 70 sqm. This area is separated from the rest of the premises and features 4 high-power electrical and water connections. The location of the Cateringfläche ensures short distances to both the raumfabrik and the Kreativwerkstatt. Deliveries are made through a separate entrance, ensuring that events in the raumfabrik hall remain undisturbed.



CONTENT:

- [About us](#)
- [Floor plan](#)
- [Hall raumfabrik](#)
- [Atelier](#)
- [Werkskantine,](#)
- [Eckraum,](#)
- [Brückenraum](#)
- [Courtyard](#)
- [Cateringfläche](#)**
- [Kreativwerkstatt](#)
- [Bistro](#)
- [Room Plan](#)
- [Our Partners](#)
- [Hotels nearby](#)
- [How to find us](#)
- [Contact](#)

YOUR BENEFITS



4 high-power and 19 standard electrical outlets



4 water connections

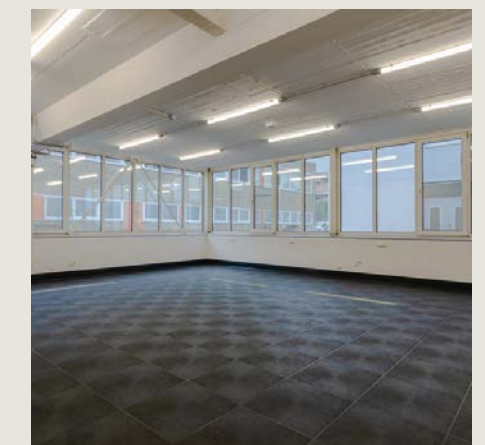
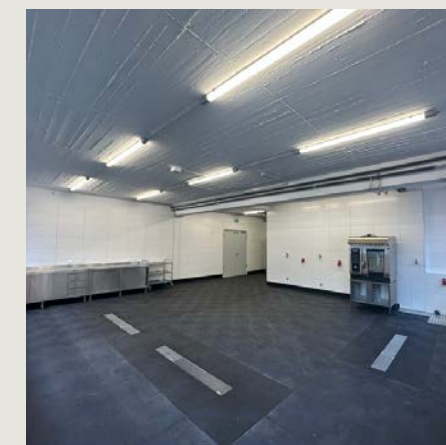
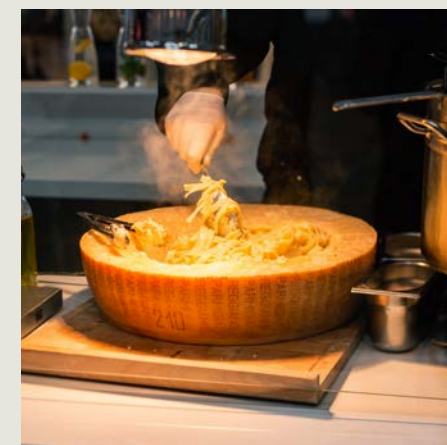
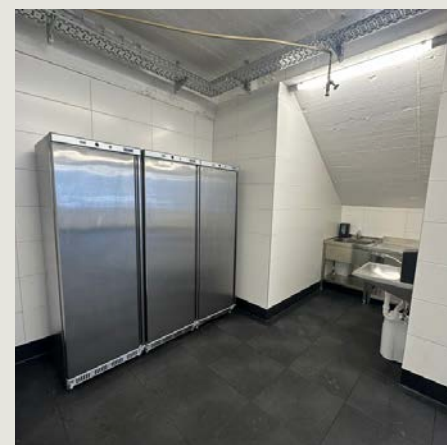
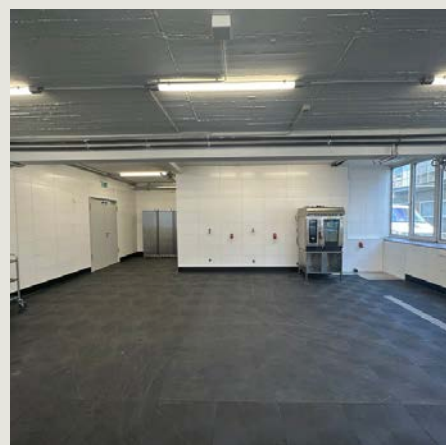


Private entrance



Short distances to the hall and the Kreativwerkstatt

ADDITIONAL TECHNICAL INFORMATION



KREATIVWERKSTATT

Located in the rear part of the raumfabrik hall is the Kreativwerkstatt, spanning 75 sqm. Adjacent to it is a small additional area of 25 sqm. The total of 100 sqm can be utilized, for example, for workshops or as back-office space. One of the key advantages for users is that this area has a separate entrance and can also be rented individually.

CONTENT:

[About us](#)

[Floor plan](#)

[Hall raumfabrik](#)

[Atelier](#)

[Werkskantine,](#)

[Eckraum,](#)

[Brückenraum](#)

[Courtyard](#)

[Cateringfläche](#)

Kreativwerkstatt

[Bistro](#)

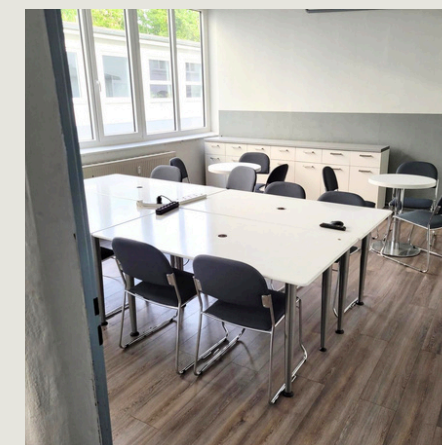
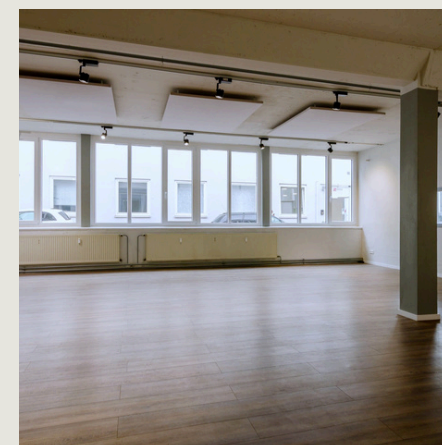
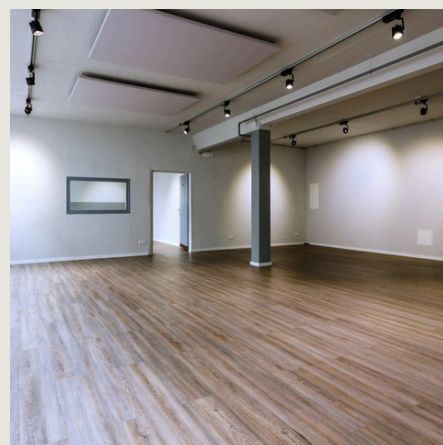
[Room Plan](#)

[Our Partners](#)

[Hotels nearby](#)

[How to find us](#)

[Contact](#)



CONTACT:

+49 (0) 69 210 85 444

info@raumfabrik-frankfurt.com

KREATIVWERKSTATT

YOUR BENEFITS



Internet/Wi-Fi (redundant system)



Barrier-free event space on the ground floor

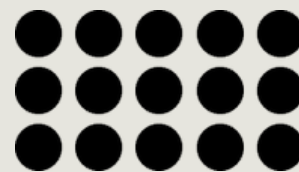


High-quality flooring

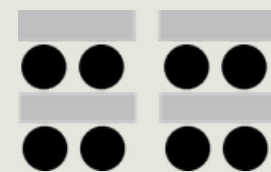


Short distances to the hall

SEATING ARRANGMENTS



Theater
60 people



Classroom
36 people



U-Shape
10 people



Boardroom
36 people



Cocktail
60 people

ADDITIONAL TECHNICAL INFORMATION

CONTENT:

[About us](#)

[Floor plan](#)

[Hall raumfabrik](#)

[Atelier](#)

[Werkskantine,](#)

[Eckraum,](#)

[Brückenraum](#)

[Courtyard](#)

[Cateringfläche](#)

Kreativwerkstatt

[Bistro](#)

[Room Plan](#)

[Our Partners](#)

[Hotels nearby](#)

[How to find us](#)

[Contact](#)

CONTACT:

+49 (0) 69 210 85 444

info@raumfabrik-frankfurt.com

BISTRO

The 130 m² bistro is centrally located on the grounds of the Heddernheimer Höfe and directly across from the raumfabrik hall, separated only by an inner courtyard that is also available for use. The 80 m² dining area, which is furnished to a high standard, can seat 45 people. The bistro can be rented on its own or in combination with the other spaces. For example, it can be used as a breakout area or, by arrangement, as a traditional dining venue, since the kitchen is fully equipped.



CONTENT:

- [About us](#)
- [Floor plan](#)
- [Hall raumfabrik](#)
- [Atelier](#)
- [Werkskantine,](#)
- [Eckraum,](#)
- [Brückenraum](#)
- [Courtyard](#)
- [Cateringfläche](#)
- [Kreativwerkstatt](#)
- Bistro**
- [Room Plan](#)
- [Our Partners](#)
- [Hotels nearby](#)
- [How to find us](#)
- [Contact](#)

YOUR BENEFITS



Internet/Wi-Fi
(redundant system)

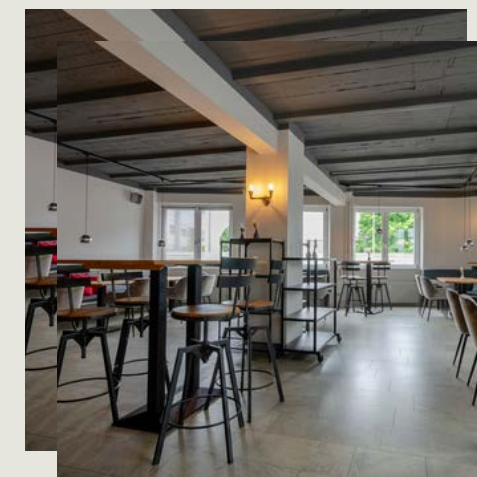
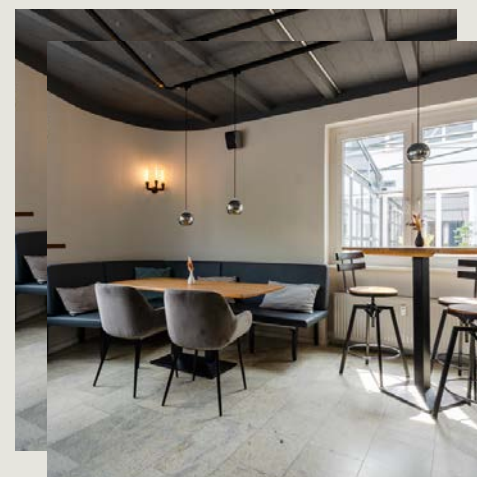


a professionally equipped,
fully stocked kitchen



Immediate proximity to the
event hall and other spaces

ADDITIONAL TECHNICAL INFORMATION



CONTACT:

+49 (0) 69 210 85 444
info@raumfabrik-frankfurt.com

Hall

- L1: 8.82 m
W1: 8.50 m
H: 2.57/2.94 m
- L2: 11.84 m
W2: 32.70 m
H: 7.82 m - 8.78 m
- L3: 8.38 m
W3: 33.50 m
H: 2.55 m/2.93 m

Courtyard

- L1: 8.00 m
W1: 35.00 m
H: 3.33 m - 4.10 m

Bistro

- L1: 7.68 m
W1: 10.00 m
H: 2.17 m/2.42 m/2.75 m/
2.82 m

Hallway

- L1: 12.30 m
W1: 1.53 m
L2: 2.25 m
W2: 10.36 m
H: 2.94 m

Cateringfläche

- L1: 8.17 m
L2: 2.44 m
L3: 2.20 m
W1: 6.95 m
W2: 10.30 m
W3: 1.06 m
W4: 1.35 m
W5: 0.65 m
H: 2.50 m/2.90 m

Office/Store

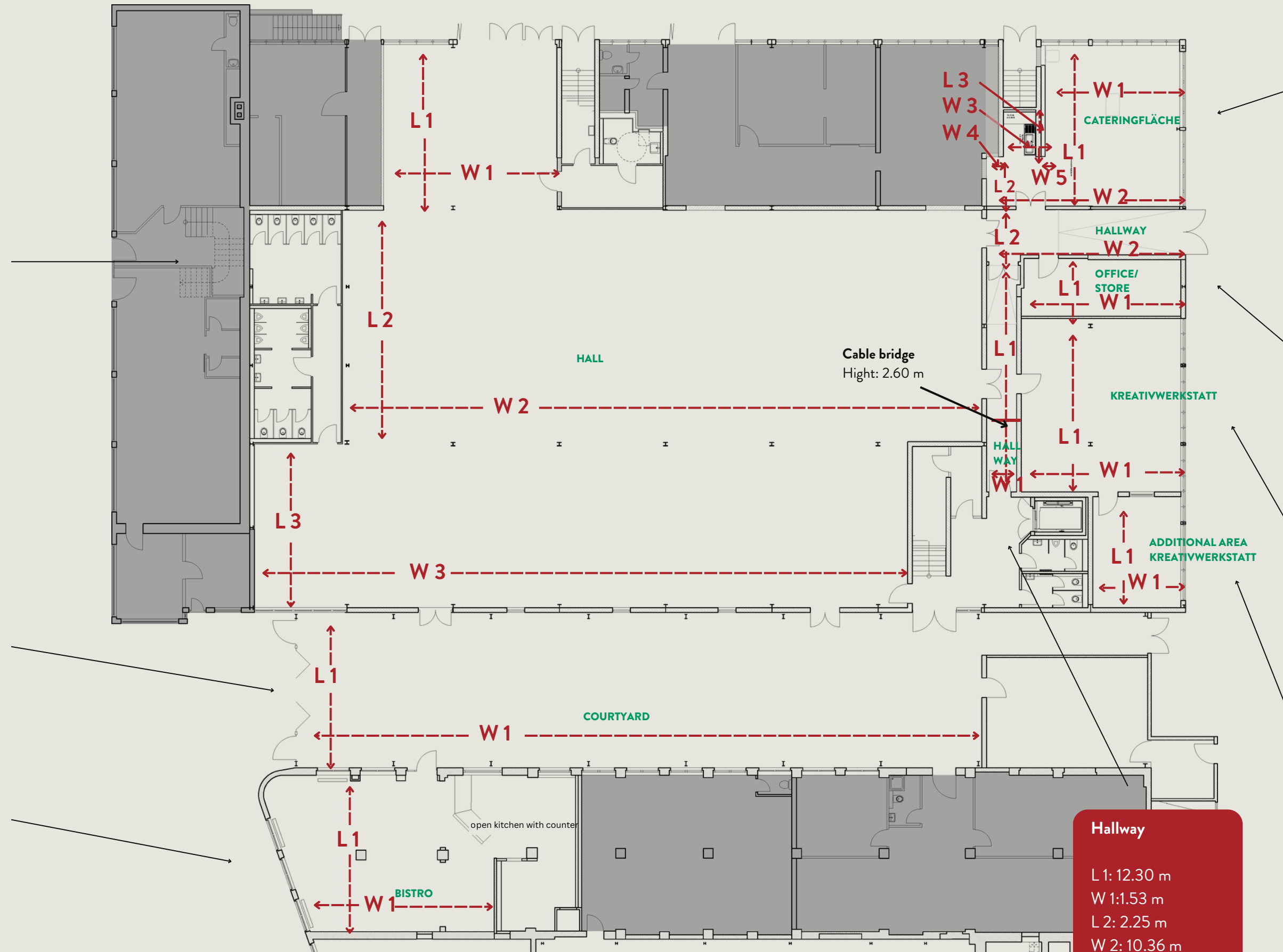
- L1: 2.77 m
W1: 8.30 m
H: 2.63 m/2.90 m

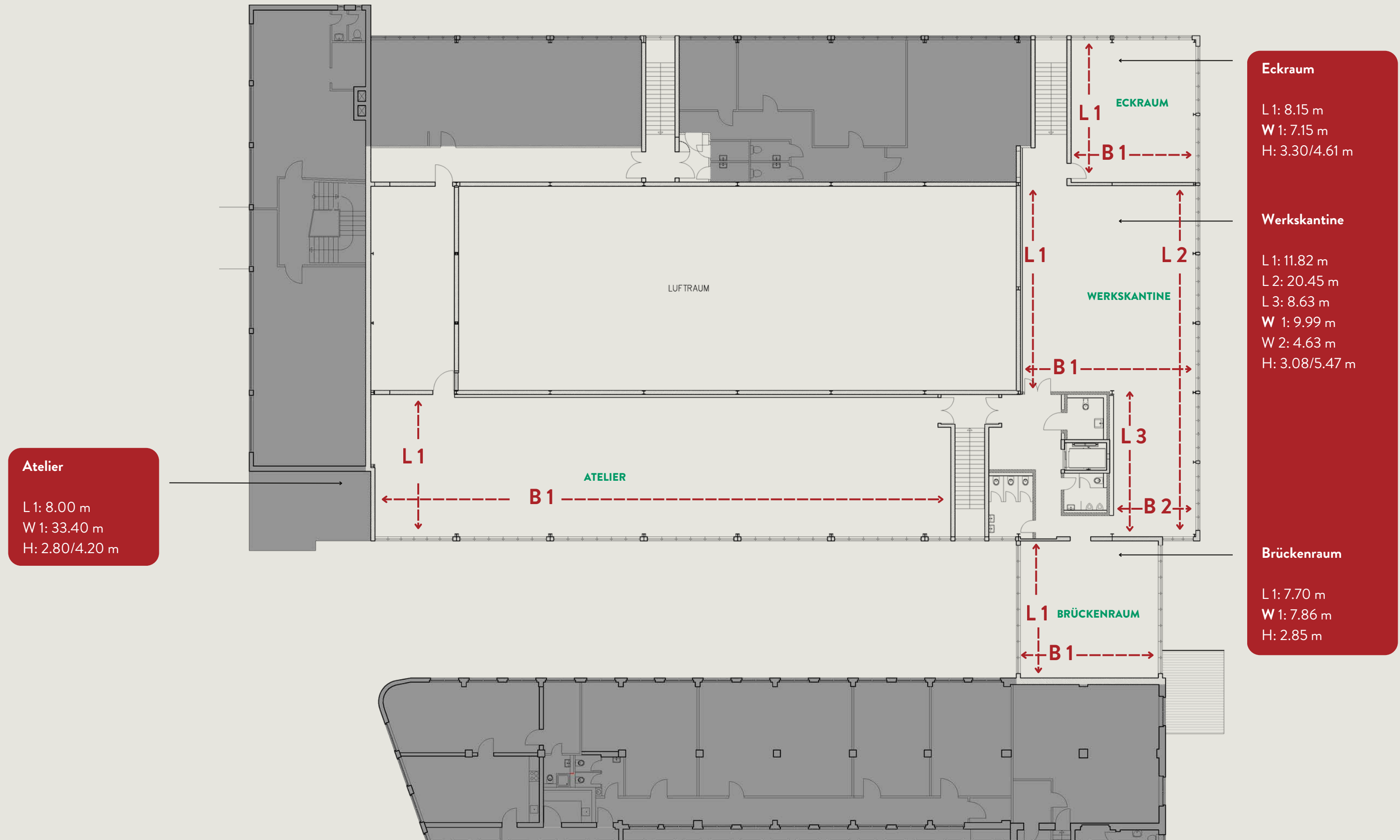
Kreativwerkstatt

- L1: 9.00 m
W1: 8.28 m
H: 2.56 m/2.95 m

**Additional Area
Kreativwerkstatt**

- L1: 5.52 m
W1: 4.72 m
H: 2.56 m/2.95 m





Atelier
L1: 8.00 m
W1: 33.40 m
H: 2.80/4.20 m

Eckraum
L1: 8.15 m
W1: 7.15 m
H: 3.30/4.61 m

Werkskantine
L1: 11.82 m
L2: 20.45 m
L3: 8.63 m
W1: 9.99 m
W2: 4.63 m
H: 3.08/5.47 m

Brückenraum
L1: 7.70 m
W1: 7.86 m
H: 2.85 m

OUR PARTNERS

CONTENT:

[About us](#)

[Floor plan](#)

[Hall raumfabrik](#)

[Atelier](#)

[Werkskantine,](#)

[Eckraum,](#)

[Brückenraum](#)

[Courtyard](#)

[Cateringfläche](#)

[Kreativwerkstatt](#)

[Bistro](#)

[Room Plan](#)

[Our Partners](#)

[Hotels nearby](#)

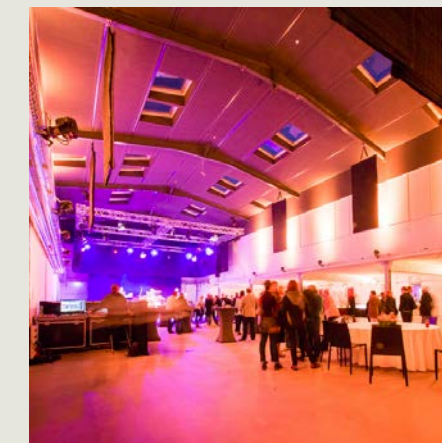
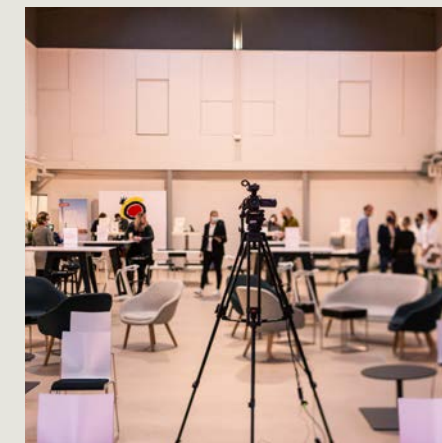
[How to find us](#)

[Contact](#)

Below, we provide an overview of recommended service providers for your event at raumfabrik Frankfurt. Whether it's an event or workshop, a corporate party or exhibition, a product presentation, or a film and photo production—choosing the right partners is crucial to the success of your event.

In this overview, you'll find selected recommendations in areas such as catering, security, technology, and equipment. Our recommendations are designed to simplify your planning and help ensure that your event runs smoothly and successfully. Learn more about the experts who can meet your needs and, in consultation with us, select the right service providers for your event.

Please feel free to contact us if there's anything else we can do to assist you.



CONTACT:

+49 (0) 69 210 85 444

info@raumfabrik-frankfurt.com

OUR PARTNERS

CONTENT:

[About us](#)

[Floor plan](#)

[Hall raumfabrik](#)

[Atelier](#)

[Werkskantine,](#)

[Eckraum,](#)

[Brückenraum](#)

[Courtyard](#)

[Cateringfläche](#)

[Kreativwerkstatt](#)

[Bistro](#)

[Room Plan](#)

Our Partners

[Hotels nearby](#)

[How to find us](#)

[Contact](#)

TASTE OF NOW

TASTE OF NOW collaborates with a variety of talented chefs and personalities from the gastronomy industry, each bringing their own unique styles to events. This allows for the culinary design of an event to be tailored precisely to the preferences, guest profile, and budget of each individual client.

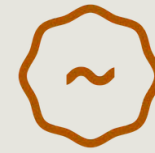
TASTE OF NOW GmbH

Edisonstraße 7, 60388 Frankfurt

Phone: +49 6109 70 676 43

Email: yummy@tasteofnow.com

www.tasteofnow.com



FLOW THE KITCHEN
Event Catering
INDIVIDUELL | REGIONAL | NACHHALTIG

FLOW THE KITCHEN's strength lies in its comprehensive, high-performance portfolio of in-house offerings, including culinary options, equipment, decoration, bar services, live cooking, service, and much more. Products and suppliers are sourced locally. Their passion for good food is reflected in the modern, sophisticated, and sustainable culinary approach of freshly prepared dishes.

FLOW Food GmbH

Langer Kornweg 19-23,
65451 Kelsterbach

Phone: +49 6107 4056730

Email: events@flow-thekitchen.de

www.flow-thekitchen.de



Regardless of location or time, FR Catering is a reliable and competent partner. They successfully navigate the demands of diverse clients and anticipate every detail, knowing they only have one event to prove themselves as the right partner.

FR Event- und MesseCatering GmbH

Georg-Heinrich-Appl-Straße 2,
97234 Reichenberg/Klingholz

Phone: +49 93 34 977 91 0

Email: info@frcatering.de

www.frcatering.de

CONTACT:

+49 (0) 69 210 85 444

info@raumfabrik-frankfurt.com

OUR PARTNERS

CONTENT:

[About us](#)

[Floor plan](#)

[Hall raumfabrik](#)

[Atelier](#)

[Werkskantine,](#)

[Eckraum,](#)

[Brückenraum](#)

[Courtyard](#)

[Cateringfläche](#)

[Kreativwerkstatt](#)

[Bistro](#)

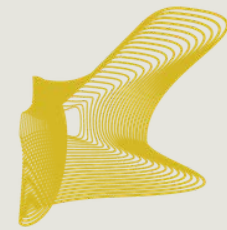
[Room Plan](#)

Our Partners

[Hotels nearby](#)

[How to find us](#)

[Contact](#)



sound
for friends

Our technical partner, sound for friends, is also located on the premises of the Heddernheimer Höfe. Their warehouse holds everything necessary for the successful execution of an event, ensuring short distances and convenience.

sound for friends GmbH

Heddernheimer Landstraße 145,
60439 Frankfurt

Phone: +49 69 348 235 00

Email: mail@soundforfriends.de
www.sffm.de



As event outfitters, Party Rent takes care of the staging of an event. This involves creating the atmosphere as well as the personalized concept that underpins it and meaningfully underscores the communication goals. The product portfolio includes event equipment such as furniture, tableware, and kitchen appliances, as well as decorations, carpets, and flooring options.

Rent.Group Frankfurt

Daimlerstraße 3, 61239 Ober-Mörlen

Phone: +49 69 56003113

Email: frankfurt@rent.group

www.party.rent/de/eventverleih-frankfurt



Crew Geist GmbH – Your partner for impactful events.

Crew Geist provides professional staff for events, conferences, exhibitions, and concerts—reliably, in full compliance with legal requirements, and with a regional focus.

The team receives customized training to ensure they are fully prepared to meet your specific needs. Through a well-designed quality management system, they guarantee safety, efficiency, and the best possible results for every assignment.

Crew Geist GmbH

Frankfurter Straße 70-72, 65760 Eschborn

Phone: +49 6196 77 00 88-80

Email: support@geister-familie.de

www.geister-familie.de

CONTACT:

+49 (0) 69 210 85 444

info@raumfabrik-frankfurt.com

HOTELS NEARBY

CONTENT:

[About us](#)

[Floor plan](#)

[Hall raumfabrik](#)

[Atelier](#)

[Werkskantine,](#)

[Eckraum,](#)

[Brückenraum](#)

[Courtyard](#)

[Cateringfläche](#)

[Kreativwerkstatt](#)

[Bistro](#)

[Room Plan](#)

[Our Partners](#)

[Hotels nearby](#)

[How to find us](#)

[Contact](#)

CONTACT:

+49 (0) 69 210 85 444

info@raumfabrik-frankfurt.com

RELEXA HOTEL FRANKFURT/MAIN

Lurgiallee 2, 60439 Frankfurt

Phone: +49 69 95778 0

Email: frankfurt.main@relexa-hotel.de

www.relexa-hotel-frankfurt.de

Distance: 1 km

Accessibility: 15 min. by foot

Number of rooms: 163

STEIGENBERGER

FRANKFURTER HOF

Am Kaiserplatz, 60311 Frankfurt

Phone: +49 69 215-02

Email: [rezeption@frankfurter-](mailto:rezeption@frankfurter-hof.steigenberger.de)

[hof.steigenberger.de](mailto:rezeption@frankfurter-hof.steigenberger.de)

www.frankfurter-hof.steigenberger.de

Distance: 9 km

Accessibility: 18 min. by public transport

Number of rooms: 267 plus 36 suites

HOTEL HEDDERNHEIMER HOF

Hedderzheimer Landstr. 82, 60439

Frankfurt

Phone: +49 69 58 33 44

Email: info@heddernheimerhof.de

www.heddernheimerhof.eu/de

Distance: 600 m

Accessibility: 10 min. by foot

Number of rooms: 30

HILTON FRANKFURT CITY CENTRE

Hochstraße 4, 60313 Frankfurt

Phone: +49 69 133 800

Email: info.frankfurt@hilton.com

[www.hilton.com/de/hotels/frahitw-hilton-](http://www.hilton.com/de/hotels/frahitw-hilton-frankfurt-city-centre/)
[frankfurt-city-centre/](http://www.hilton.com/de/hotels/frahitw-hilton-frankfurt-city-centre/)

Distance: 9 km

Accessibility: 21 min. by public transport

Number of rooms: 342

B&B HOTEL FRANKFURT-NORD

Heinrich-Lanz-Allee 3 , 60437 Frankfurt

Phone: +49 69 950904-0

Email: frankfurt-nord@hotelbb.com

www.hotel-bb.com/de/hotel/frankfurt-nord

Distance: 7 km

Accessibility: 30 min. by underground U9

12 min. by car

ADINA APARTMENT HOTEL

FRANKFURT NEUE OPER

Wilhelm-Leuschner-Straße 6, 60329

Frankfurt

Phone: + 49 69 2474740

Email: frankfurtno@adina.eu

[www.adinahotels.com/de/apartments/fran-](http://www.adinahotels.com/de/apartments/frankfurt-neue-oper/)
[kfurt-neue-oper/](http://www.adinahotels.com/de/apartments/frankfurt-neue-oper/)

Distance: 9 km

Accessibility: 23 min. by public transport

Number of rooms: 134

HOTELS NEARBY

CONTENT:

[About us](#)

[Floor plan](#)

[Hall raumfabrik](#)

[Atelier](#)

[Werkskantine,](#)

[Eckraum,](#)

[Brückenraum](#)

[Courtyard](#)

[Cateringfläche](#)

[Kreativwerkstatt](#)

[Bistro](#)

[Room Plan](#)

[Our Partners](#)

[Hotels nearby](#)

[How to find us](#)

[Contact](#)

CONTACT:

+49 (0) 69 210 85 444

info@raumfabrik-frankfurt.com

FLEMING'S SELECTION HOTEL CITY

FRANKFURT

Eschenheimer Tor 2, 60318 Frankfurt

Phone: +49 69 427 232-0

Email: frankfurt-city@flemings-hotels.com

www.flemings-hotels.com/frankfurt-city-selection-hotel

Distance: 8 km

Accessibility: 16 min. by public transport

Number of rooms: 206

HYATT HOUSE FRANKFURT

ESCHBORN

Frankfurter Straße 77 , 65760 Eschborn

Phone: +49 6196 5824 1234

www.hyatt.com/hyatt-house/de-DE/fraxf-hyatt-house-frankfurt-eschborn

Distance: 7 km

Accessibility: 13 min. by car

Number of rooms: 190

DORINT HOTEL

FRANKFURT/OBERURSEL

Königsteiner Straße 29, 61440 Oberursel

Phone: +49 6171 2769-0

Email: info.oberursel@dorint.com

www.hotel-frankfurt-oberursel.dorint.com/de

Distance: 10 km

Accessibility: 20 min. by car

Number of rooms: 140

H+ HOTEL FRANKFURT ESCHBORN

Frankfurter Str. 5 , 65760 Eschborn

Phone: +49 6196 4999-0

Email: eschborn@h-hotels.com

www.h-hotels.com/de/hplus/hotels/hplus-hotel-frankfurt-eschborn

Distance: 12 km

Accessibility: 13 min. by car

Number of rooms: 215

ELAYA HOTEL FRANKFURT OBERURSEL

Zimmersmühlenweg 35,

61440 Oberursel (Taunus)

Phone: +49 6171 5000

Email:

frankfurt-oberursel@elaya-hotels.com

www.elaya-hotels.com/frankfurt-oberursel

Distance: 6 km

Accessibility: 10 min. by car

Number of rooms: 220

MARITIM HOTEL BAD HOMBURG

Ludwigstraße 3, 61348 Bad Homburg v. d. H.

Phone: 0800 3386172

Email: info.hom@maritim.de

www.maritim.de/de/hotels/deutschland/hotel-bad-homburg/unsere-hotels

Distance: 11 km

Accessibility: 20 min. by car

Number of rooms: 148

HOW TO FIND US

CONTENT:

[About us](#)

[Floor plan](#)

[Hall raumfabrik](#)

[Atelier](#)

[Werkskantine,](#)

[Eckraum,](#)

[Brückenraum](#)

[Courtyard](#)

[Cateringfläche](#)

[Kreativwerkstatt](#)

[Bistro](#)

[Room Plan](#)

[Our Partners](#)

[Hotels nearby.](#)

[How to find us](#)

[Contact](#)

Navigation Address

Heddernheimer Landstraße 155,
60439 Frankfurt am Main

Distances

- 15 minutes – Frankfurt city centre
- 15 minutes – Frankfurt airport
- 12 minutes – Eschborn
- 5 minutes – Merton district

By Car

You can reach us by car via the A3, A5, and A66 motorways.

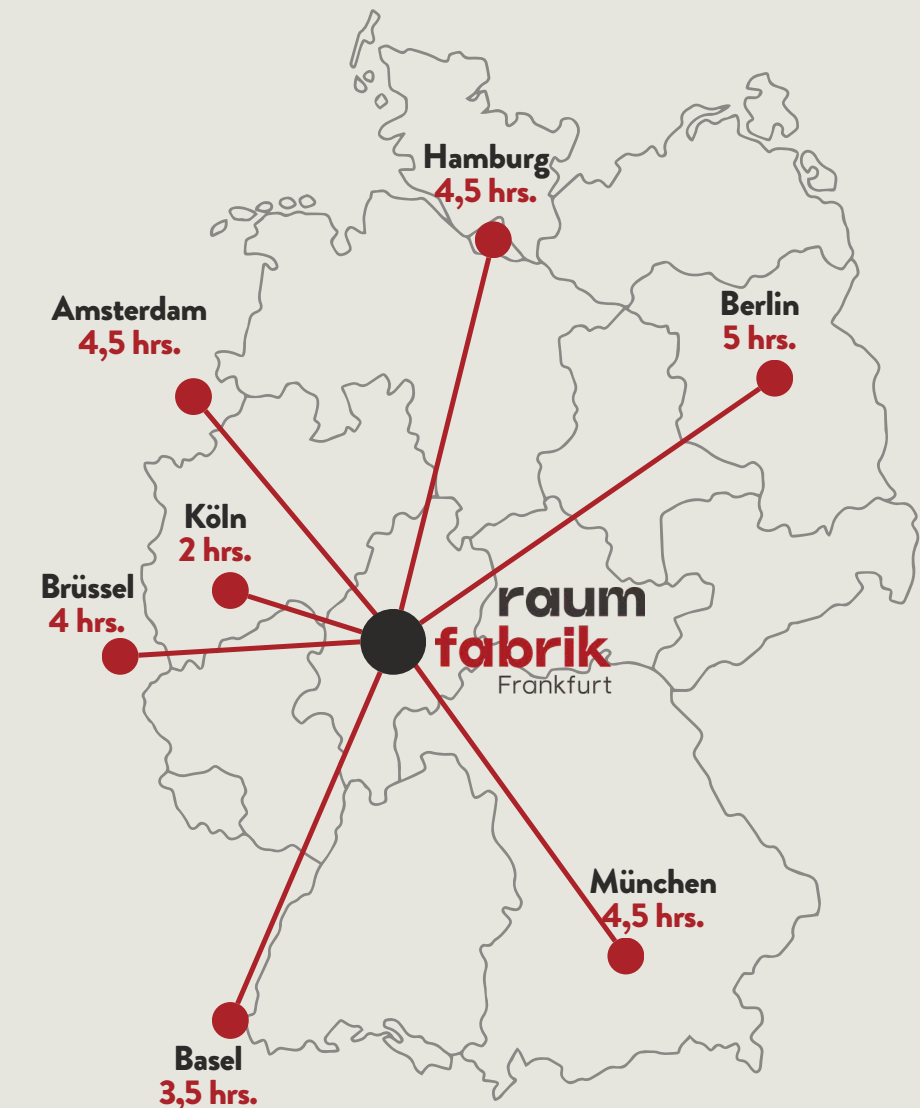
We recommend arriving by public transportation.

By bus and train

- U1 + U9 Station Heddernheimer Landstraße (1 minute walk)
- U3 + U8 Station Wiesenu. (10 minutes walk)
- Bus 29 + N3 Station Oberschelder Weg (5 minutes walk)

Parking

- Limited number of parking spaces on-site
- Access with turning circle for buses and trucks



Traveling by train

CONTACT:

+49 (0) 69 210 85 444

info@raumfabrik-frankfurt.com

Operating company

raumfabrik Frankfurt GmbH
Hedderheimer Landstraße 155
60439 Frankfurt am Main
Phone: +49 69 210 85 444
info@raumfabrik-frankfurt.com



Contact

Managing Director: Nicole Harloff
Mobile: +49 172 429 1105
n.harloff@raumfabrik-frankfurt.com



Contact

Office Management: Zlata Ruzek
Mobile: +49 175 22 55 014
z.ruzek@raumfabrik-frankfurt.com



Contact

Project Management: Moritz Harloff
Mobile: +49 151 227 10 200
m.harloff@raumfabrik-frankfurt.com